

Solar Powered Irrigation System (SPIS)

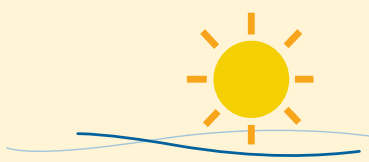
How to use your water in a sustainable way

How to estimate how much water you'll need



Crop type

Different crops need different amounts of water.



Area Climate

Arid, dry areas need more water
Wet, mountain areas need less water.



Soil Type

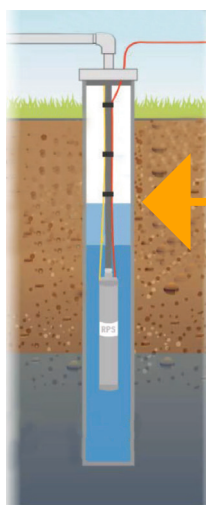
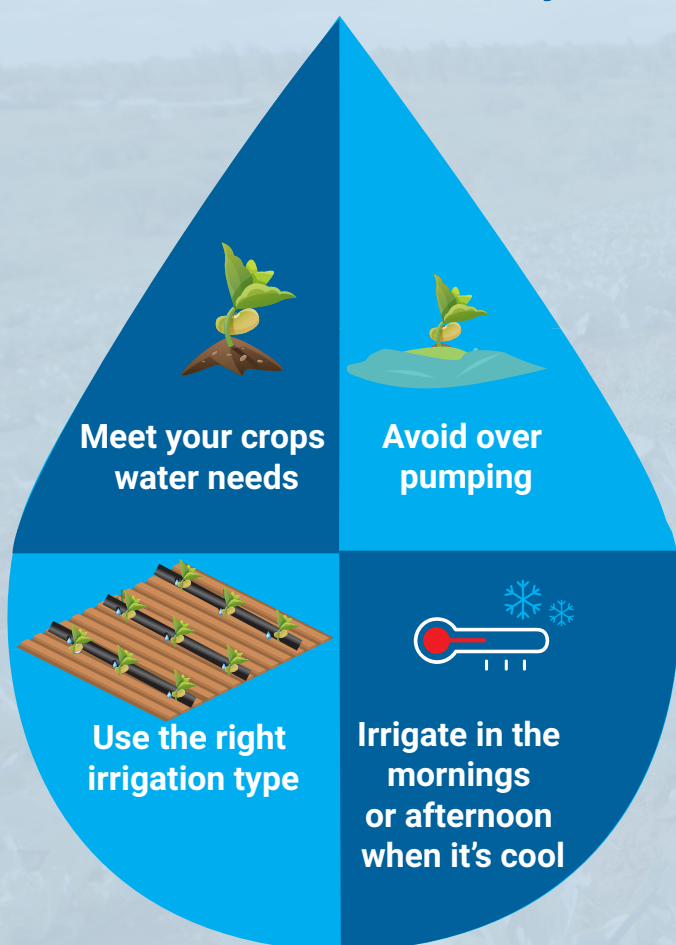
Light, sandy soils- irrigate often, using little water
Heavy, clay soils- irrigate less often, using much water.



Irrigation Type

A sprinkler? or a drip line? Irrigation types have different pros and cons.

Use your water in a sustainable way!



How to monitor your water refreshment rate!

The day after pumping check that your water level in well or reservoir is the same as the previous day. If not, you are using water faster than it can recharge.

Call in an expert to advise you!

These are signs that you are over-pumping:

- ⚠ Your water source runs dry
- ⚠ Plants close to your water source start to wilt or hang
- ⚠ Soil starts to show white salt crusts
- ⚠ Your neighbours run out of water
- ⚠ Trees and shrubs close to the water source start to die