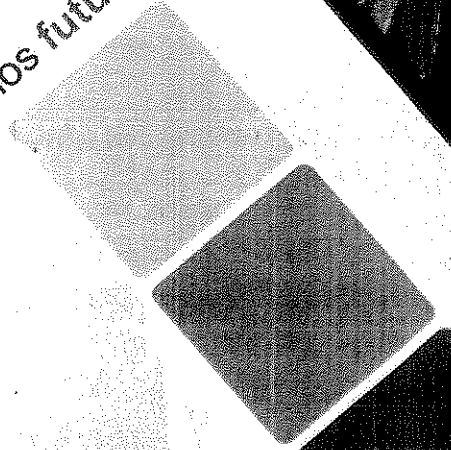


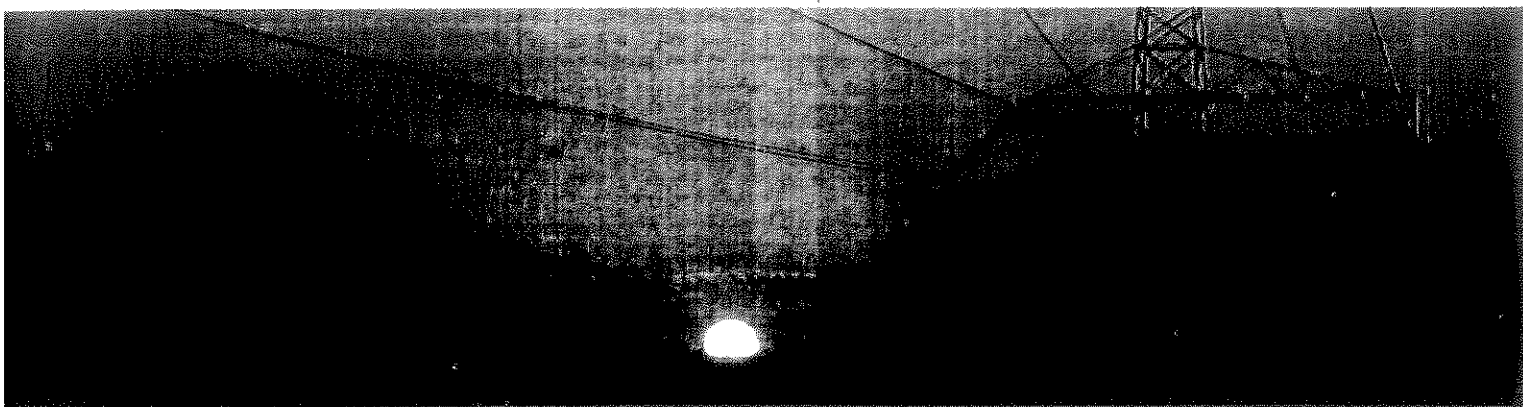
ELECTRICIDADE
DE MOÇAMBIQUE, E.P.

SUMÁRIO ESTATÍSTICO 2009
STATISTICAL SUMMARY

com energia construímos futuro



SUMÁRIO ESTATÍSTICO
STATISTICAL SUMMARY
2009



ELECTRICIDADE
DE MOÇAMBIQUE, E.P.

MISSÃO / MISSION

Exploração dos serviços de produção, transporte, distribuição e comercialização de energia eléctrica de boa qualidade, em defesa do interesse público, em benefício do consumidor, preservando o meio ambiente.

Exploring the services of Generation, Transmission, Distribution and Commercialization of electricity in good quality protecting the Public interest, in benefit of the consumer, preserving the environment.

VISÃO / VISION

Produzir, de forma sustentável, valor através da satisfação plena da necessidade dos clientes em energia eléctrica de qualidade e serviços associados.

Producing in a sustainable way value through the satisfaction of customers need in the quality of electricity and associated services.

VALORES / VALUES

Integridade, Profissionalismo e Dedicção.

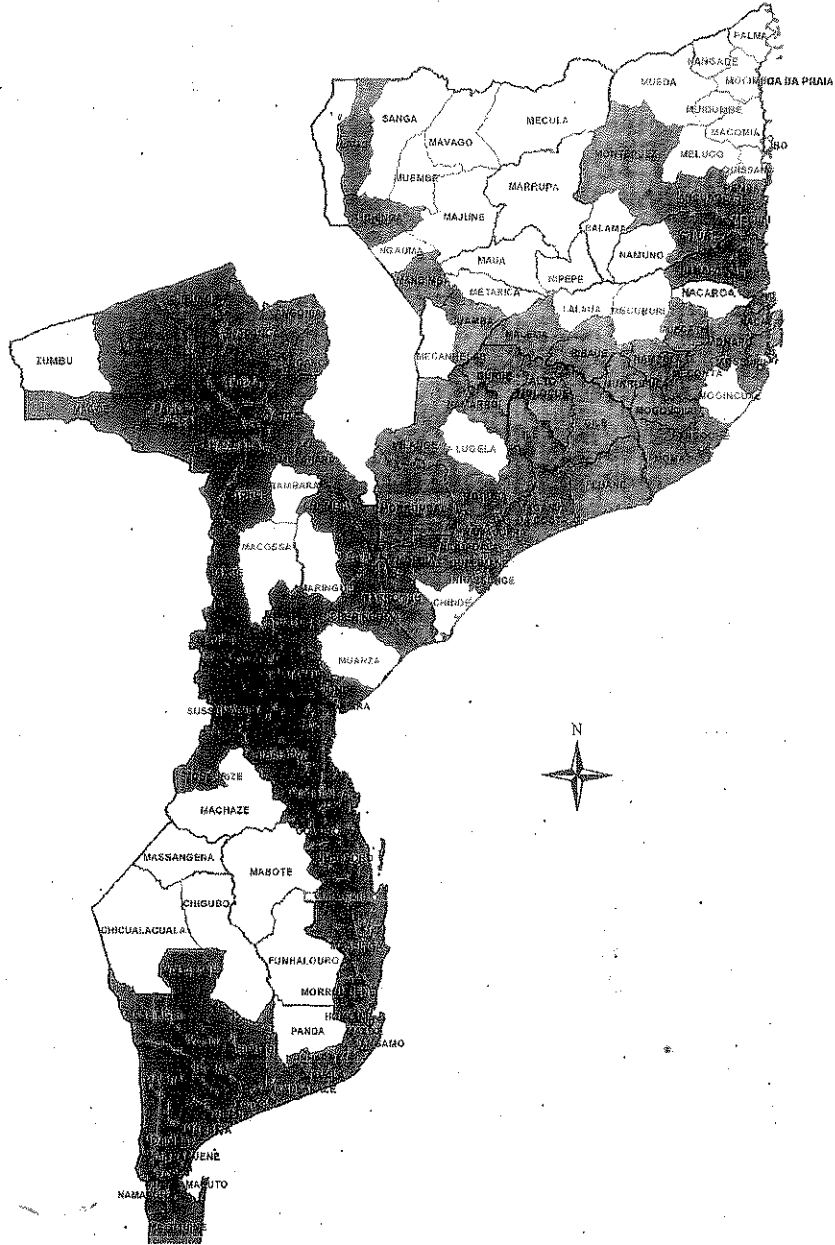
Integrity, Professionalism and Commitment.

LEMA / SLOGAN

Com Energia Construimos Futuro.

With Energy we build the Future.

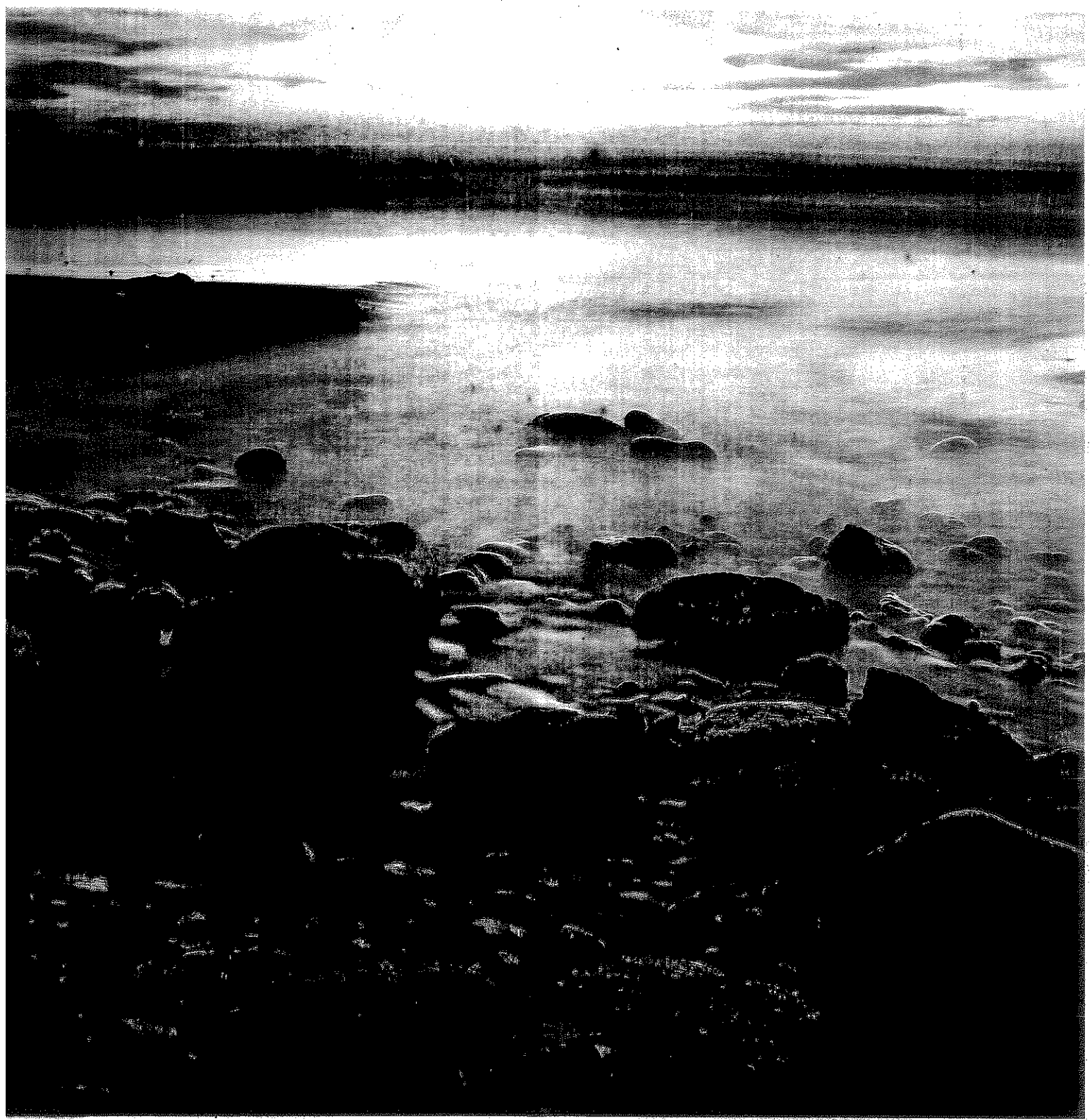
88 DISTritos/DISTRICTS



SEDES DISTRITAIS ELECTRIFICADAS
CAPITAL DISTRICTS ELECTRIFIED UP TO 2009

INDICE
TABLE OF CONTENTS

Destaques <i>Highlights</i>	9
Generalidades/Unidades <i>Generalities/Units</i>	10
Resumo Geral <i>Overall Summary</i>	12
Pontas e factores de carga <i>Maximum Demand (MD) and load factors</i>	18
Custos e receitas, operador do mercado <i>Costs and revenues, market operator</i>	20
Clientes <i>Customers</i>	21
Novas Ligações, Acesso e Consumo per Capita/ <i>New Connections, Access and Per Capita Consumption</i>	23
Resumo, Região Norte <i>Summary, Northern Region</i>	24
Resumo, Região Centro <i>Summary, Central Region</i>	26
Resumo, Região Sul <i>Summary, Southern Region</i>	27
Principais Indicadores de Qualidade de Serviço das Redes <i>Network Principal Service Quality Indicators</i>	28-29

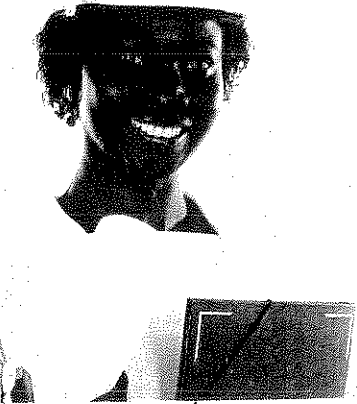
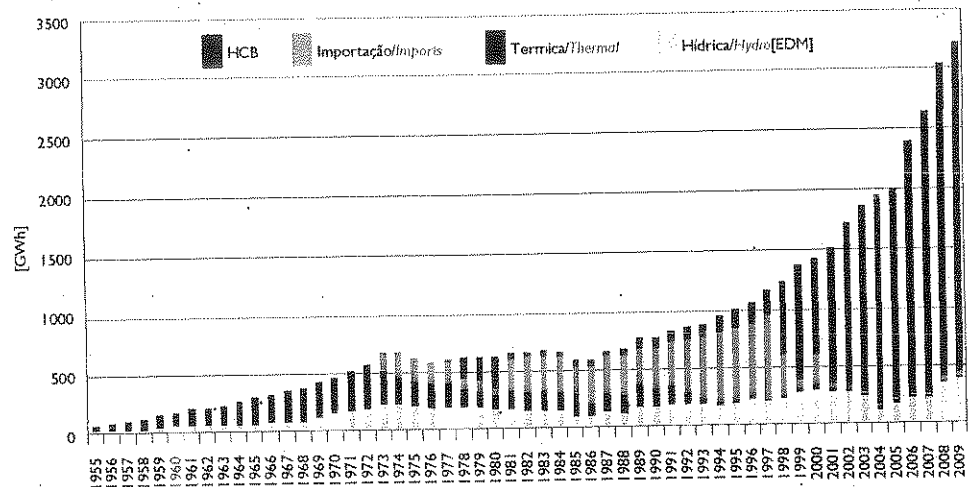


Tab.1. Balanço Energético / Energy Balance 2009 & 2008, [GWh]

	2009	Peso/Weight	2008	Peso/Weight	Evol
Produção / Generation	386	12%	352	12%	10%
Aquisição / Purchase (HCB)	2,775	87%	2,653	87%	5%
Importação / Imports	31,9	1%	27	1%	17%
Energia Total / Total Energy	3,193	100%	3,032	100%	5%
Exportação / Exports	514	16%	670	22%	-23%
Bruto Disponível / Gross Available	2,679	84%	2,362	78%	13%
Perdas de Transporte / Transmission Losses	156	6%	162	7%	-4%
Consumos Auxiliares & Subestações / P.P. Station Losses	26	1%	23	1%	11%
Clientes Especiais / Special Customers	88	3%	60	2%	45%
Distribuição / Distribution	2,409	90%	2,117	90%	14%
Iluminação Pública / Public Lighting	42	2%	38	2%	11%
Consumos Internos / EDM's Consumption	6	0.2%	6	0%	6%
Perdas de Distribuição / Distribution Losses	562	21%	443	19%	27%
Facturação / Invoicing	1,847	59%	1,674	71%	10%
Facturação + Clientes Especiais / Invoicing including Special Customers	1,934	72%	1,734	73%	12%
Perdas Totais / Total Losses	744	23%	628	21%	18%
Perdas Totais / Total Losses	744	23%	628	21%	18%

* Considerando as exportações e clientes especiais no total / Including Exports and special customers

Fig.5. Evolução de Fornecimento por Fonte / Supply by Source in 1955-2009 [GWh]



Abreviaturas:

AD= Área de Distribuição
ADPM = Área de Distribuição da Província de Maputo
ADCM = Área de Distribuição da Cidade de Maputo
Sul-HVDC = Alta Tensão em Corrente Contínua
SAPP* = Southern African Power Pool
LCN = Linha Centro Norte
RNT = Rede Nacional de Transporte
VF = Vilas Fronteiriças
DDS = Direcção de Distribuição Sul
DDN = Direcção de Distribuição Norte
DDC = Direcção de Distribuição Centro
IP = Iluminação pública
SAIDI = Duração Média de Interrupções
SARI = Tempo Médio de Reposição
SAIFI = Frequência Média de Interrupção

ATSU - Área de transporte Sul
ATCN - Área de transporte Centro Norte
ATCE - Área de transporte Centro

Abbreviations:

AD= Distribution Area
ADPM = Distribution Area of Maputo Province
ADCM = Distribution Area of Maputo City
South-HVDC = High Voltage Direct Current
SAPP = Southern African Power Pool
LCN = Northern Central Powerline
RNT = National Transmission Grid
VF = Border Towns
DDS = Southern Distribution Directorate
DDN = Northern Distribution
DDC = Central Distribution
IP = Public Lighting
SAIDI = System Average Interruption Duration Index
SARI = System Average Restoration Index
SAIFI = System Average Interruption Frequency Index

ATSU - Southern Transmission Area
ATCN - Northern Transmission Area
ATCE - Central Transmission Area

Unidades de Medida / Units of Measurement

Tensão / Voltage

1kV (Kilovolt) = 1000 Volts

Energia / Energy

1kWh (Kilowatt-hora) = 1000 Wh

1 MWh (Megawatt-hora) = 1000 kWh

1GWh (Gigawatt-hora) = 1000 MWh = 1000 000kWh

Potência / Demand

W = Watt

kW = 1000 Watts

*) Organização das Companhias de electricidade da SADC Região Austral de África

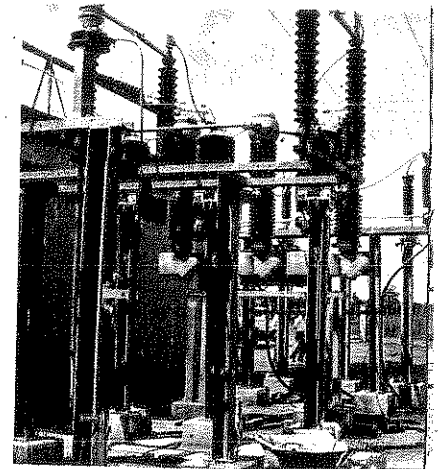
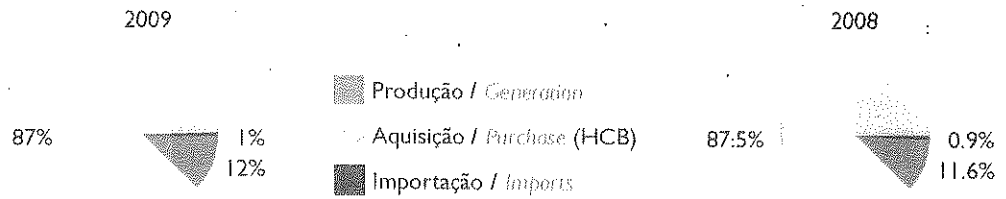


Fig.6. Energia por Fonte/Energy by Source (%) 2009/2008



Tab.3. Resumo/Summary 2009/2008 (GWh)

	2009	Peso/Weight	2008	Peso/Weight	Evol.
OFERTA/ SUPPLY					
Aquisição / Purchase (HCB)	2,775	87%	2,653	87%	5%
*Produção / Generation (DSP)	386	12%	352	12%	10%
Importação(AT) / Imports (IT)	23	1%	20	1%	16%
Importação(BT/MT) / Imports (B/M/T)	9	0%	8	0%	20%
Energia Total Fornecida/ Total Energy Supplied	3,193	100%	3,032	100%	5%
PROCURA/ DEMAND					
Exportação / Exports	514	16%	670	22%	-23%
Vendas à Clientes Especiais/ Sales to Special Customers	89	3%	60	2%	45%
Entregue à DDN/ Northern Distribution	302	9%	256	8%	18%
Entregue à DDC/ Central Distribution	558	17%	497	16%	12%
Entregue à DDS/ Southern Distribution	1,731	54%	1,550	51%	12%
Energia Total Consumida/ Total Energy Consumed	3,193	100%	3,032	100%	5%

* Produção EDM/EDM's Generation (Hídrica e Térmica/ Hydro and Thermal)

Fig.7. Fornecimento do DDM e Consumo/Supply consumption (GWh)

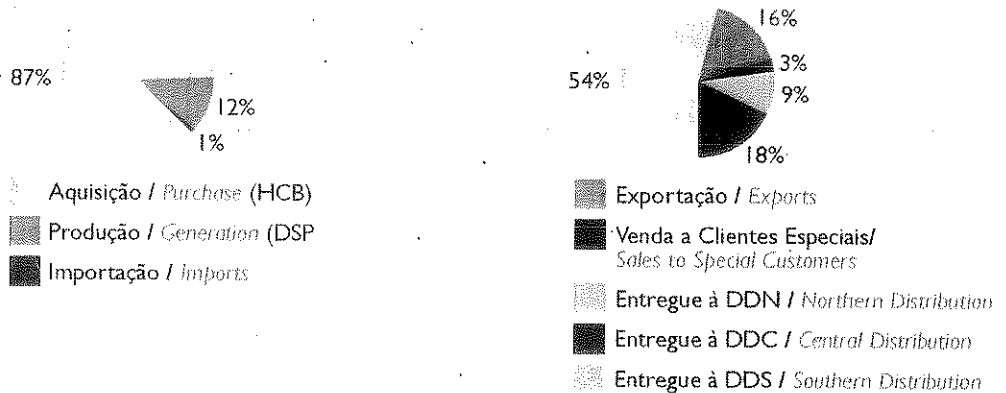
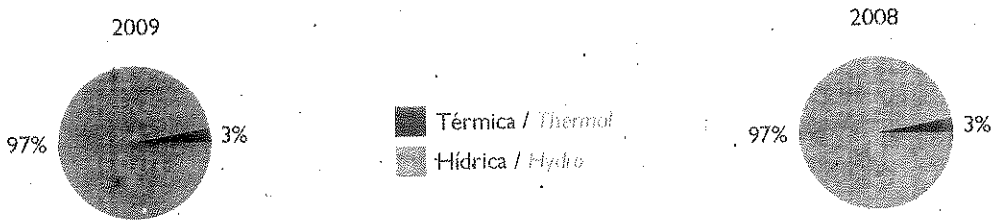


Fig.8. Produção da EDM por Fonte/EDM's Generation by Source



Tab.4. Energia Facturada por Área da Distribuição
Invoiced Energy by Distribution Area 2009 (MWh)

Area	Domestic	Geral	Agrícola	G.C.BT	Total BT	MT/AT	Total Cobrável	Ilum.Pública	C. Internos	Total Cons.
Area	Domestic	Commer.	Agricult.	L.V.B.C	Total LV	MV/HV	Collectable	Public Lighting	EDM Cons.	Total Cons.
Pemba	18,341	6,679	0	2,474	27,493	10,249	37,742	1,472	159	39,374
Lichinga	12,483	4,711	0	2,676	19,869	2,861	22,731	1,813	93	24,636
Nacala	17,907	6,518	19	1,086	25,530	36,212	61,742	1,173	196	63,111
Nampula	45,161	13,215	0	8,230	66,606	20,113	86,719	1,355	172	88,246
Angoche	2,981	1,080	0	443	4,504	544	5,048	253	85	5,386
DPS	76,572	37,202	19	14,869	144,001	69,779	119,557	6,063	705	120,759
Mocimboa	11,467	4,848	0	2,008	18,324	5,277	23,601	1,325	68	24,995
Quellmane	26,128	8,710	0	4,917	39,755	11,289	51,044	1,863	392	53,299
Teta	30,522	9,191	48	3,815	43,577	21,134	64,711	1,079	227	66,017
Chimolô	29,297	11,238	0	539	41,074	24,012	65,086	1,752	255	67,093
Beira	82,000	21,973	0	15,439	119,412	93,505	212,917	6,152	449	219,518
DPC	172,615	55,970	48	16,719	252,152	132,210	477,539	12,771	1,137	490,777
Inhamitanga	21,138	13,801	0	5,404	40,343	7,180	47,523	1,720	240	49,483
Xai-Xai	24,670	6,959	0	3,720	35,349	5,739	41,088	3,024	388	44,500
Chokwê	20,759	5,839	25	2,489	29,112	37,872	66,984	1,475	449	68,907
ADPM	126,930	32,413	183	6,205	165,731	232,908	398,639	5,125	337	404,101
ADCM	280,728	75,144	8	65,128	421,008	191,944	612,953	12,576	2,693	628,222
DPS	474,225	134,156	216	92,925	681,339	476,643	1,192,186	23,920	4,108	1,932,133
EDM	750,512	222,319	283	124,572	1,097,687	700,840	1,798,527	42,156	6,204	1,846,887

Fig.9. Peso de cada Região no Balanço Energético
Weight of each Region in the Energy balance

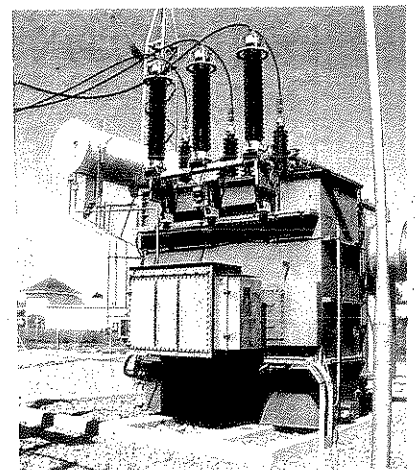
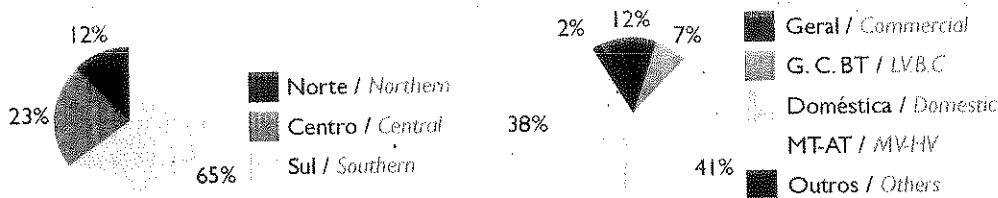
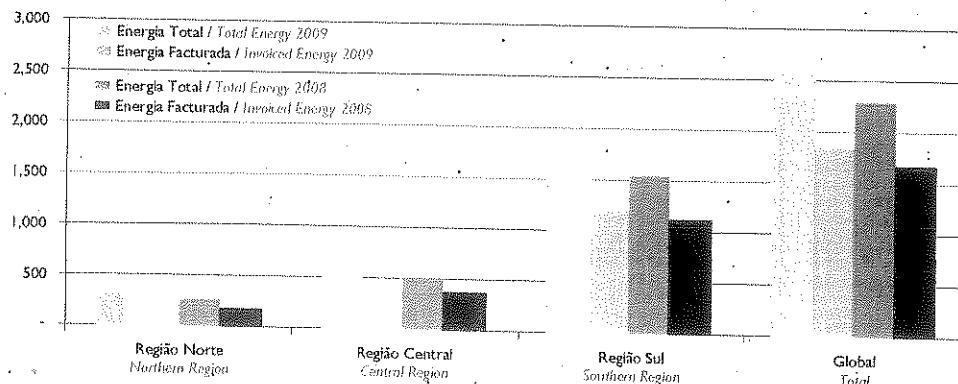


Fig.10. Energia Total e Facturação de Energia por Região
Total energy and invoicing by Region (GWh): 2009-2008



Pontas e Factores de carga/Maximum Demand and Load Factors

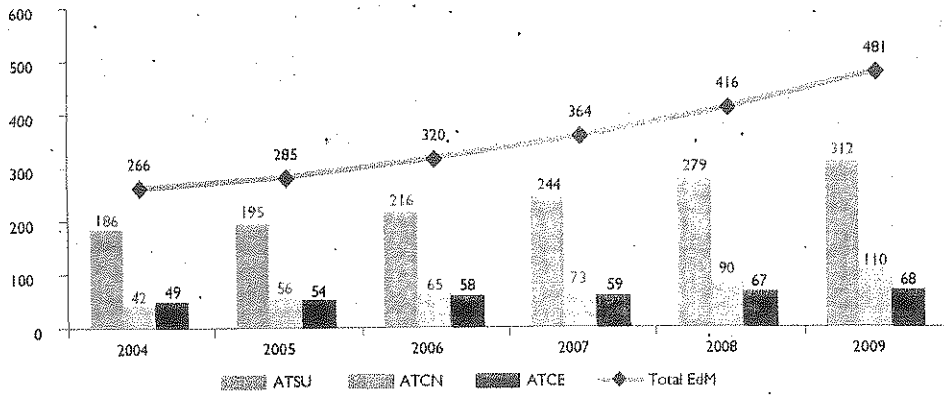
Tab.5. Pontas Máximas nos sistemas da EDM/Maximum Demand in the EDM's Systems(MW)

SISTEMAS INTERLIGADOS / INTERCONNECTED SYSTEMS	Ponta Máxima Maximum Demand	Factor de Carga Load Factor
Linha Centro-Norte & Tete/ Central-Northern & Tete System	110	0.52
Sistema Centro *(Mav,Chi,Chib)/ Central System	68	0.59
Sistema Sul / Southern System	312	0.62
Total EDM (Simultânea) / Total EDM (Simultaneous)	491	0.64
AREAS DE DISTRIBUIÇÃO / DISTRIBUTION AREAS		
Pemba	10.1	0.61
Lichinga	7.0	0.56
Nacala	16.5	0.63
Nampula	23.0	0.57
Angoche	1.0	0.79
Mocuba	6.1	0.63
Quelimane	12.7	0.66
Tete	16.0	0.58
Chimoio	15.6	0.65
Beira	57.8	0.56
Inhambane	11.0	0.68
Xai-Xai	14.7	0.47
Chokwé	15.7	0.61
ADPM	100.0	0.68
ADCM	170.0	0.62

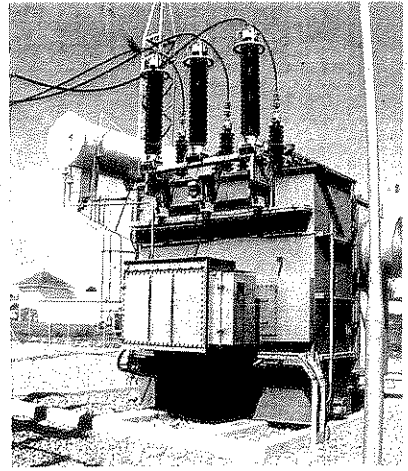
*Mavuzi, Chicamba e Chibata



Fig. 11. Evolução anual da Procura / Annual Demand's Growth 1994-2009



PONTAS E FACTORES DE CARGA
MAXIMUM DEMAND AND LOAD FACTOR



Compra e Venda de Energia
Purchase and Revenue of Energy GWh & USD

Fig.12. Custo de Energia à EDM por Fornecedor/EdM's Cost by Supplier of Energy

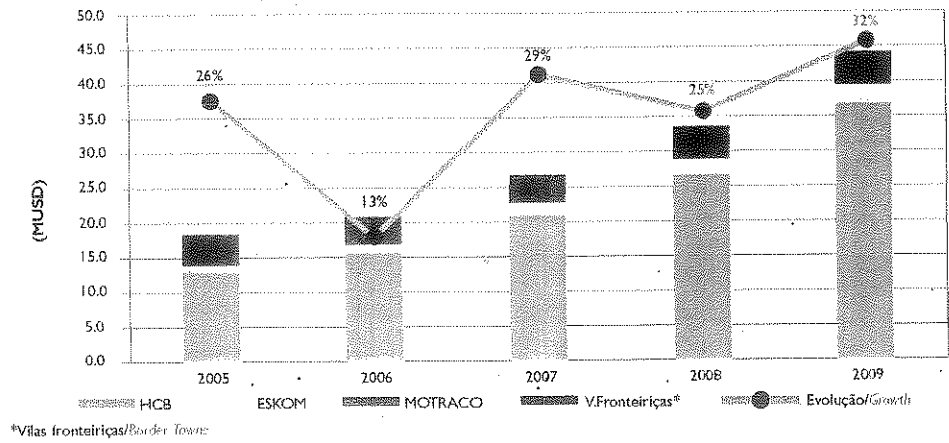
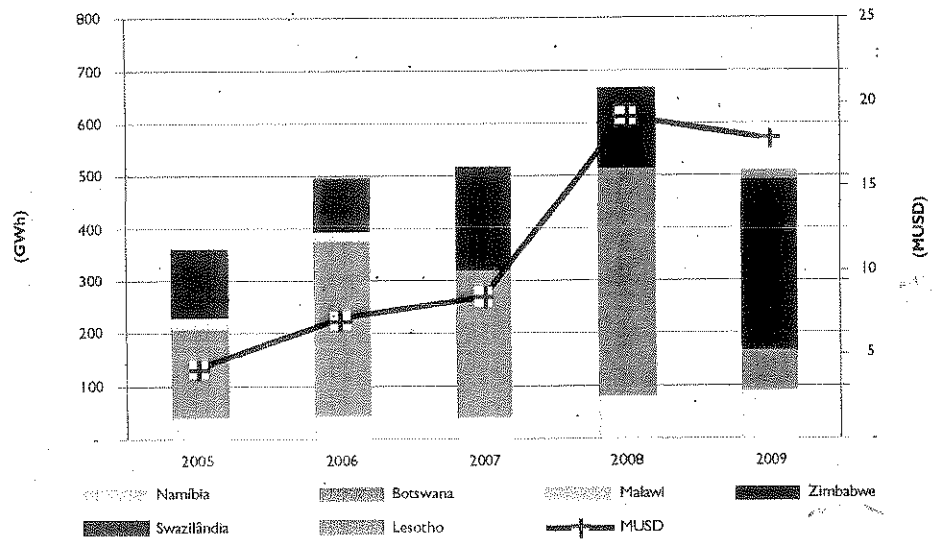


Fig.13. Evolução do Volume das Exportações / Export's Growth in [GWh] & [USD]



Tab.6. Número de Clientes por Distribuidora e Categoria
Number of Customers by Distributor and Category

Área Area	Doméstica Domestic	Geral Commer.	Agrícola Agricult	G.C.BT L.V.B.C	Total BT Total LV	MT MV	AT HV	Total Clientes Clients
Pemba	20,412	2,151	-	45	22,608	45	-	22,653
Lichinga	18,867	1,986	-	80	20,933	12	-	20,945
Nacala	30,293	2,693	1	29	33,016	90	-	33,106
Nampula	55,947	3,483	-	88	59,518	71	-	59,589
Angoche	8,014	543	-	8	8,565	4	-	8,569
EDM	131,523	10,836	-	250	142,609	222	-	142,831
Mocuba	20,402	2,156	-	44	22,602	33	-	22,635
Quelimane	28,689	2,246	-	100	31,035	62	-	31,097
Tete	29,562	2,470	3	60	32,095	49	-	32,144
Chimoio	26,928	2,946	-	16	29,890	227	-	30,117
Beira	54,290	5,878	-	480	60,648	188	-	60,836
EDC	159,877	15,626	-	700	175,203	507	-	175,710
Inhambane	24,169	3,447	-	75	27,691	81	-	27,772
Xai-Xai	27,005	2,026	-	47	29,078	61	-	29,139
Chokwé	28,498	2,120	3	36	30,657	66	-	30,723
ADPM	130,194	5,097	27	102	135,420	527	1	135,948
ADCM	172,313	12,718	1	818	190,350	461	1	190,812
EDS	307,179	24,908	31	1,028	332,146	988	2	333,134
EDM	680,583	51,460	35	2,020	734,108	1,977	2	736,085

CLIENTES
CUSTOMERS

Tab.7. Evolução do Credenciamento/Prepayments Growth, 2005-2009

Áreas Areas	Clientes com Pré-Pagamento /Pre-Paid Customer				
Ano/Year	2005	2006	2007	2008	2009
ADCM	56,975	71,611	90,994	107,382	148,485
ADPM	16,884	25,142	43,319	78,628	109,415
Inhambane	-	7,653	11,253	13,286	17,918
Xai-Xai	2,868	4,193	6,606	9,358	12,484
Chokwé	4,394	6,874	10,038	14,215	19,777
Beira Southern	8,121	11,573	15,210	19,487	26,105
Beira	22,783	29,701	36,892	42,223	56,402
Tete	2,610	6,630	16,590	20,721	24,475
Quelimane	-	872	16,899	20,814	24,938
Mocuba	2,036	3,220	4,081	4,533	15,059
Chimoio	-	-	-	-	9,375
Beira Central	27,019	40,423	74,462	88,291	124,749
Nampula	11,407	17,770	27,024	34,157	43,215
Nacala	6,831	11,114	16,273	22,301	28,105
Pemba	3,210	5,334	8,290	11,617	15,470
Lichinga	-	605	5,692	8,441	10,568
Angoche	-	543	3,672	5,159	5,831
Beira Northern	21,008	35,344	60,251	81,675	105,086
Total EDM	129,998	191,262	297,623	392,835	535,517

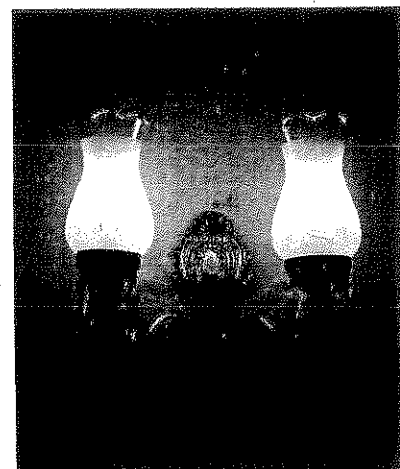
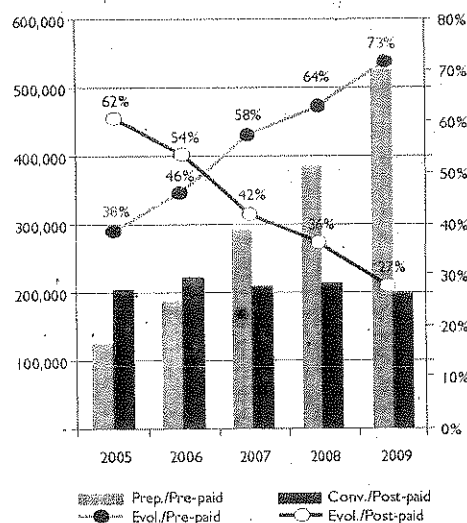
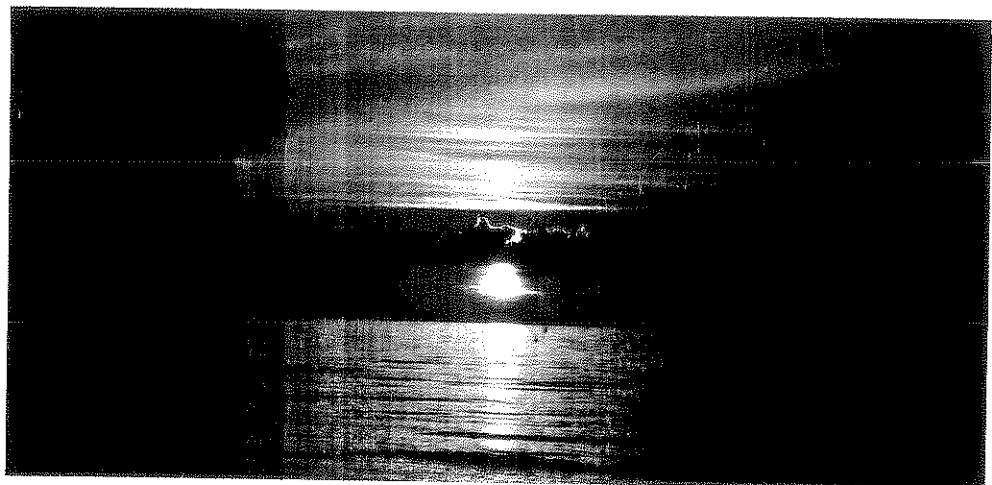
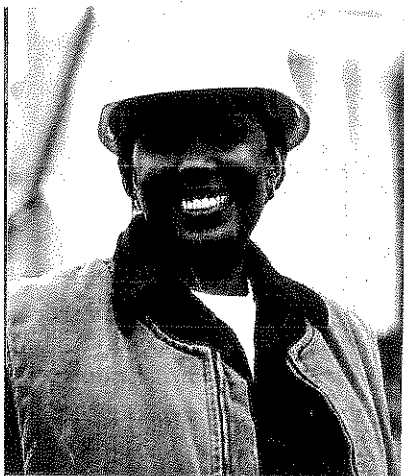
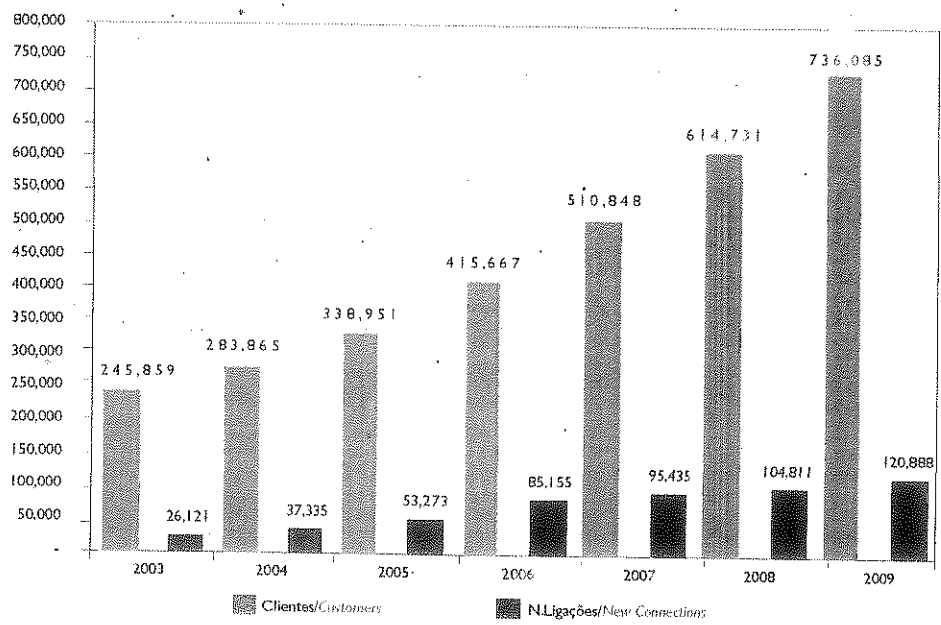


Fig.14. Evolução de Clientes e Novas Ligações
Number of Customers and New Connections Growth



Tab.8. Novas Ligações / New Connections

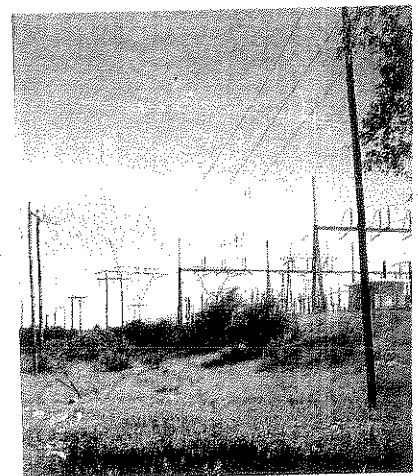
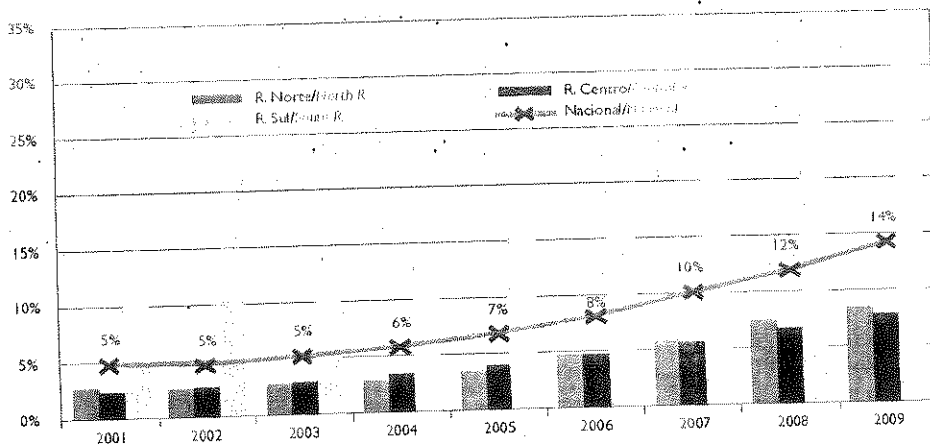
Area Área	Jan Jan	Fev Feb	Mar Mar	Abr Apr	Mai May	Jun Jun	Jul Jul	Ago Aug	Sep Sep	Out Oct	Nov Nov	Dez Dec	Total
Nampula	415	505	550	579	406	2,332	1,564	1,017	896	514	192	394	9,314
Nacala	49	94	126	243	324	1,584	499	308	470	363	531	599	5,290
Pemba	236	292	252	325	328	662	406	317	417	407	514	451	4,607
Lichinga	125	376	287	345	296	411	444	340	360	158	261	269	3,612
Angoche	81	82	60	121	140	230	178	198	191	241	261	81	1,864
EDN	505	1,249	1,725	1,453	1,522	8,511	5,911	3,832	3,257	1,937	720	1,781	28,577
Beira	321	556	589	745	1,139	1,354	1,086	918	1,031	1,504	481	493	10,217
Chimoio	226	265	349	269	528	443	371	303	192	518	280	841	4,585
Tete	476	305	447	287	513	877	471	429	503	410	661	413	5,792
Quelimane	210	303	527	544	401	506	388	517	588	622	644	136	5,386
Mocuba	350	278	256	340	370	461	292	391	378	569	492	470	4,647
EDC	1,481	1,712	2,123	2,135	2,651	1,571	1,207	2,222	2,222	2,222	2,122	2,122	18,722
ADCM	1,286	1,537	1,974	2,347	2,526	2,617	2,636	2,329	2,145	2,890	2,545	2,616	27,448
ADPM	1,878	1,454	1,718	1,506	1,103	1,906	2,646	3,138	1,726	1,717	1,028	2,371	22,191
Chókwè	76	122	362	371	392	1,039	1,240	303	494	448	203	107	5,157
Xai-Xai	78	119	177	165	352	871	142	493	695	354	420	393	4,259
Inhamitanga	324	293	388	393	520	297	1,103	806	766	474	634	521	6,519
SDZ	4,647	3,522	4,616	4,767	4,913	4,240	7,737	7,019	5,975	7,011	1,150	3,065	43,777
EDM	6,121	6,981	9,062	8,620	9,358	5,590	13,466	11,807	10,822	11,199	9,147	10,095	120,888

Tab.9. Consumo Per Capita/Consumption of electricity per capita

	2001	2002	2003	2004	2005	2006	2007	2008	2009
Consumo/Consumption(MWh)	1,355,032	1,410,774	1,482,357	1,572,077	1,651,609	1,761,293	1,960,623	2,201,802	2,522,878
População/Population*	17,656,152	18,082,523	18,543,566	18,961,503	19,420,036	19,888,701	20,530,714	20,854,057	21,350,008
kWh per Capita	77	78	80	83	85	89	96	106	119

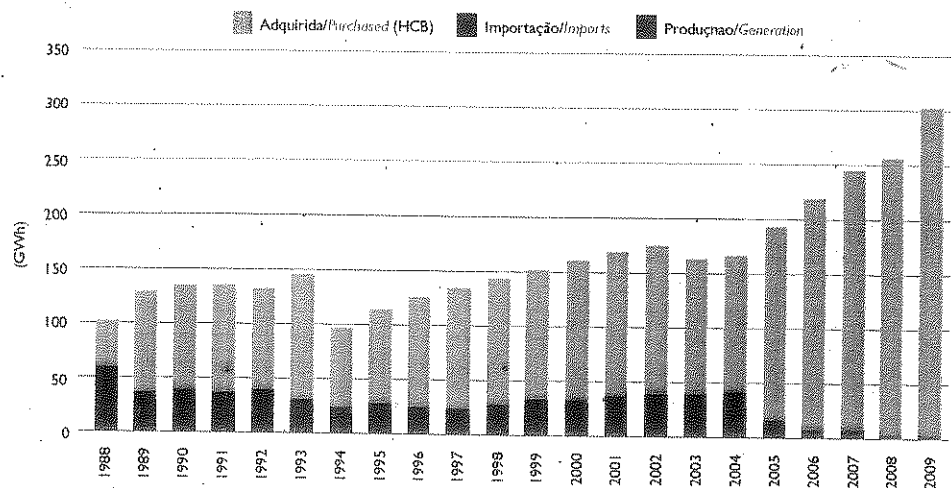
*INE-Censo 2007

Fig.15. Evolução do Acesso da população à Energia/Growth of National Access to Electricity



NOVAS LIGAÇÕES,
 ACESSO E CONSUMO PER CAPITA
 NEW CONNECTIONS,
 ACCESS AND PER CAPITA CONSUMPTION

Fig. 16. Evolução anual do fornecimento de energia/Annual energy supply growth



Tab. 10. Balanço Energético/Energy balance, GWh [2009&2008]

	2009 Peso/Weight		2008 Peso/Weight		Evol.
Produção / Generation*	0	0%	1	1%	-100%
DOM (DSP + IMP + HCB)	302	100%	254	99%	19%
Energia Total / Total Energy	302	100%	256	100%	18%
Exportação/Exports	0	0%	0	0%	
Perdas de Transporte / Transmission Losses	18	6%	18	7%	1%
Bruto Disponível / Gross Available	283	94%	238	93%	19%
Consumos Auxiliares & Subestações/ P. Station Losses	3	1%	3	1%	16%
Distribuição / Distribution	280	93%	234	91%	20%
Iluminação Pública / Public Lighting	6	2%	4	2%	38%
Consumos Internos / EDM Consumption	1	0%	1	0%	17%
Perdas de Distribuição / Distribution Losses	60	20%	48	19%	23%
Factoração / Invoicing	221	73%	186	73%	19%
Perdas Totais / Total Losses	81	27%	69	27%	17%

*Produção de reserva/Backup generation

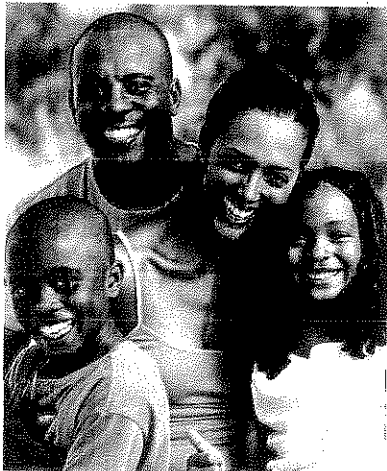
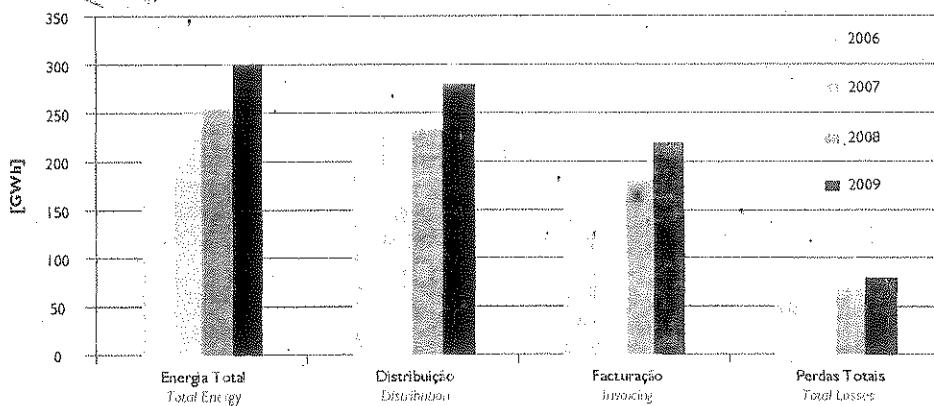


Fig. 17. Evolução do balanço energético/Energy balance growth



RESUMO REGIÃO NOROCCIDENTAL
SUMMARY NORTHERN REGION

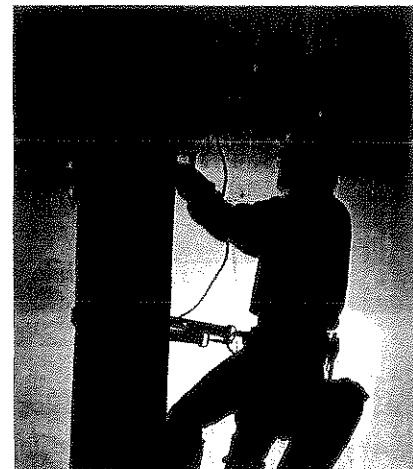
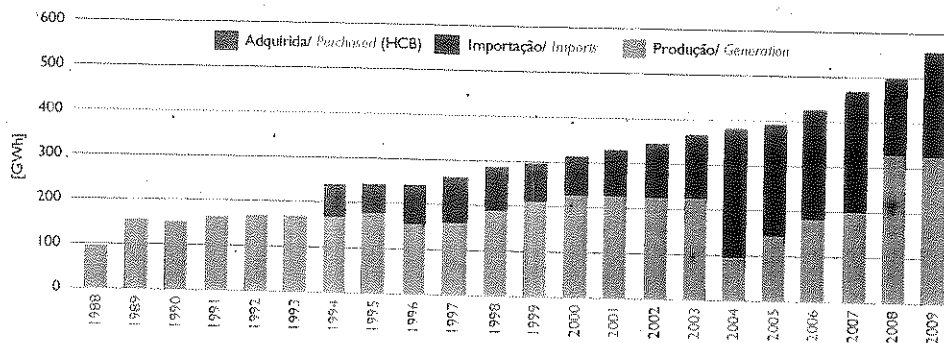


Fig.18. Evolução anual do fornecimento de energia/Annual growth energy supply



Tab. 11. Balanço Energético/Energy balance, GWh (2009&2008)

	2009	Peso/Weight	2008	Peso/Weight	Evol
Produção/Generation	0	0%	0	0%	-100%
DOM (DSP + IMP + HCB)	556	100%	497	100%	12%
Exportação/Exports	0	0%	0	0%	0%
Perdas de Transporte / Transmission Losses	6	0%	0	0%	0%
Bruto Disponível / Gross Available	33	6%	35	7%	-4%
Consumos Auxiliares & Subestações / P. Station Losses	524	94%	462	93%	13%
Distribuição / Distribution	6	1%	5	1%	14%
Iluminação Pública / Public Lighting	519	93%	457	92%	13%
Consumos Internos / EDM Consumption	12	2%	12	2%	6%
Perdas de Distribuição / Distribution Losses	1	0%	1	0%	-1%
Faturação / Invoicing	88	16%	85	17%	4%
Perdas Totais / Total Losses	127	23%	124	25%	2%

Fig.19. Evolução do balanço energético/Energy balance growth

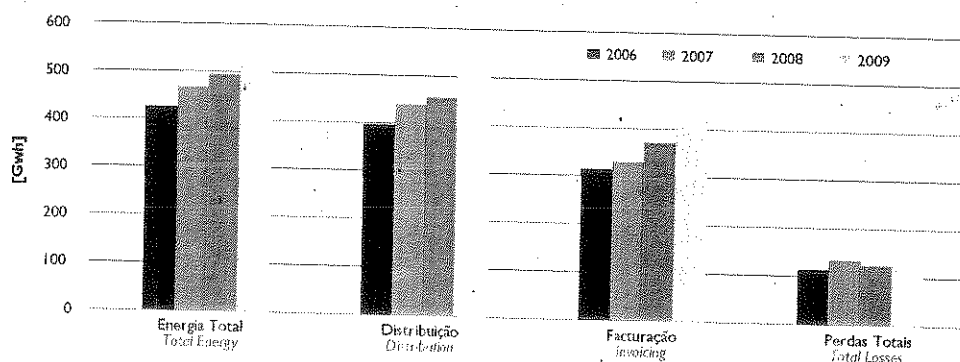
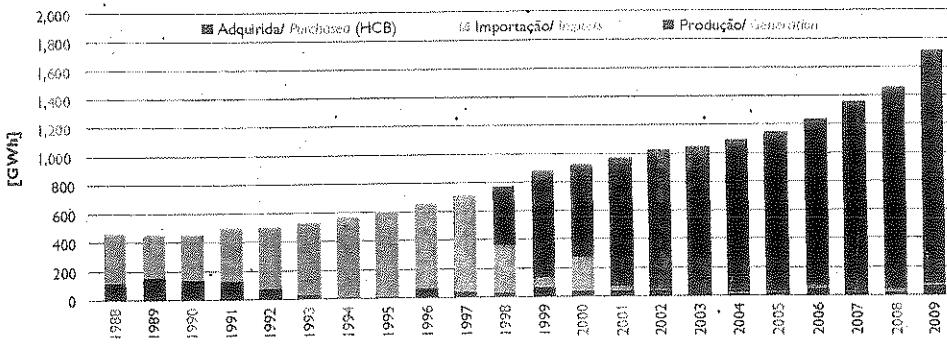


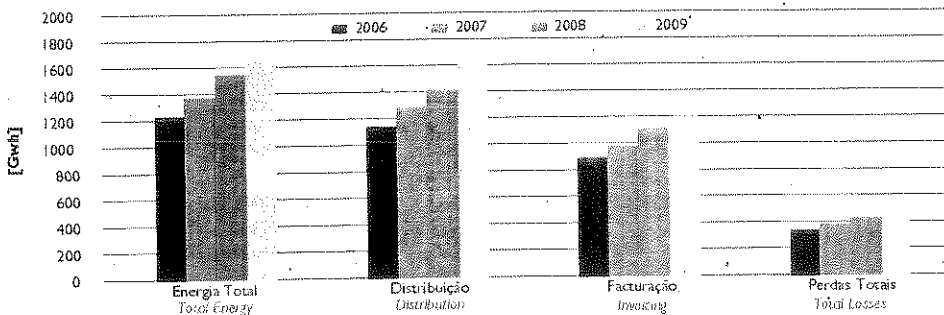
Fig.20. Evolução anual do fornecimento de energia/Annual energy supply growth



Tab. 12. Balanço Energético/Energy balance, GWh (2009/2008)

	2009	Peso/Weight	2008	Peso/Weight	Evol
Produção / Generation	0	0%	10	1%	100%
DOM (DSP + IMP + HCB)	1,731	100%	1,540	99%	12%
Energia Total / Total Energy	1,731	100%	1,550	100%	12%
Exportação / Export	-	0%	-	0%	0%
Perdas de Transporte / Transmission Losses	104	6%	108	7%	-4%
Bruto Disponível / Gross Available	1,628	94%	1,442	93%	13%
Consumos Auxiliares & Subestações / P. Station Losses	17	1%	16	1%	10%
Distribuição / Distribution	1,610	93%	1,426	92%	13%
Iluminação Pública / Public Lighting	24	1%	22	1%	8%
Consumos Internos / EDM Consumption	4	0%	4	0%	7%
Perdas de Distribuição / Distribution Losses	415	24%	310	20%	34%
Facturação / Invoicing	1,195	69%	1,116	72%	7%
Perdas Totais / Total Losses	536	31%	434	28%	24%

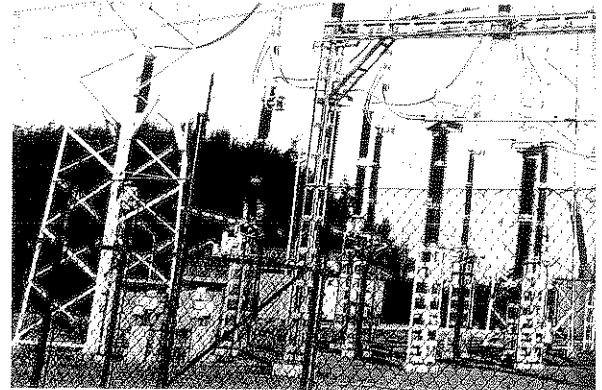
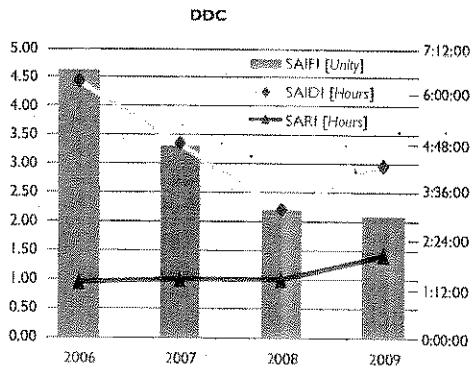
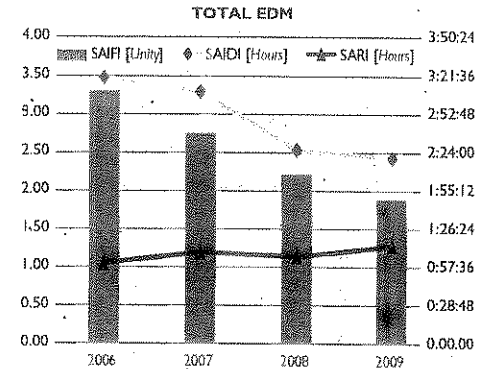
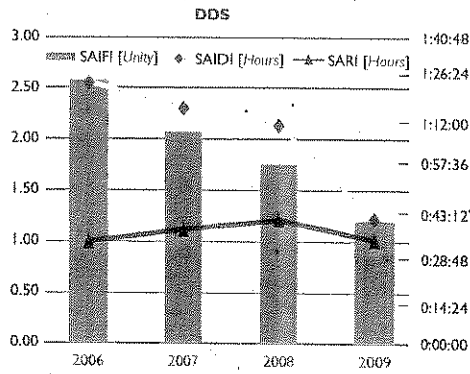
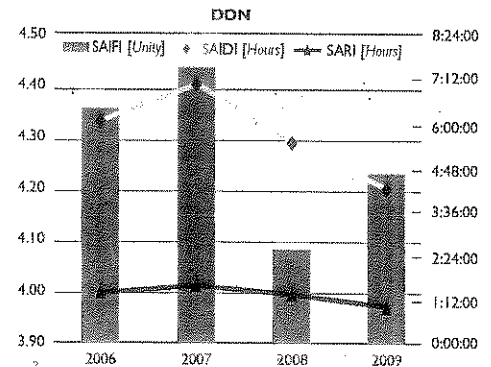
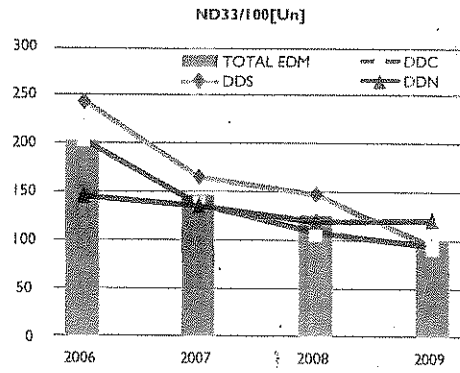
Fig.21. Evolução do balanço energético/Energy balance growth



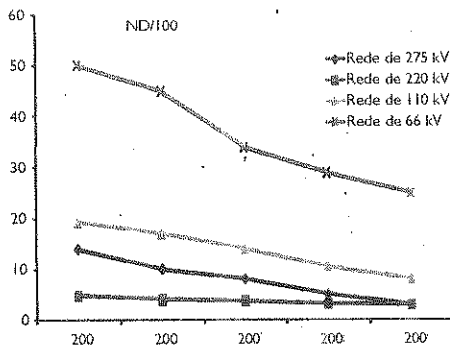
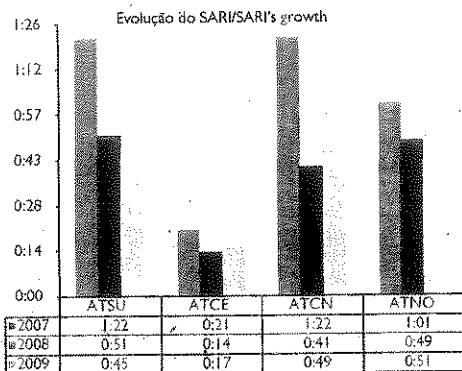
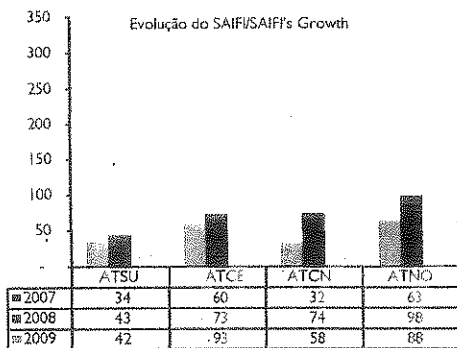
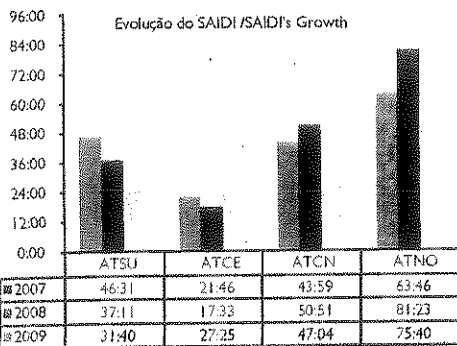
RESUMO REGIÃO SUL
SUMMARY SOUTHERN REGION

**PRINCIPAIS INDICADORES DE
QUALIDADE DE SERVIÇO DAS REDES
NETWORK PRINCIPAL SERVICE
QUALITY INDICATORS**

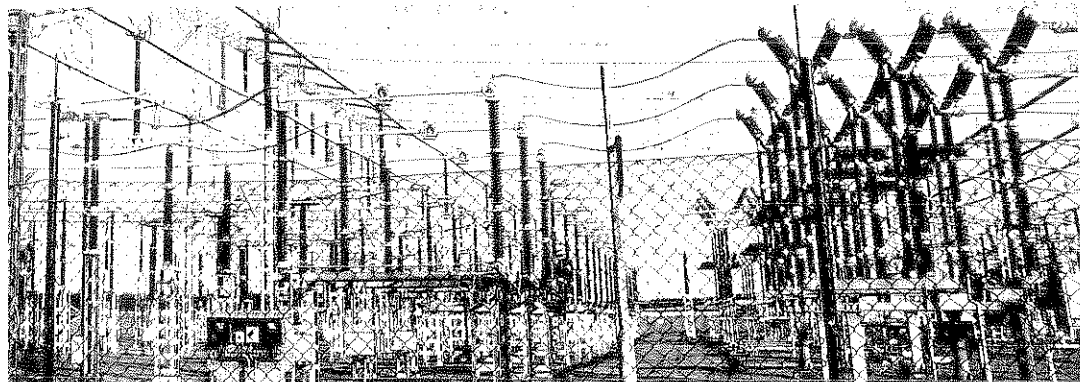
Rede de Distribuição em Média Tensão/Medium Voltage Distribution Network



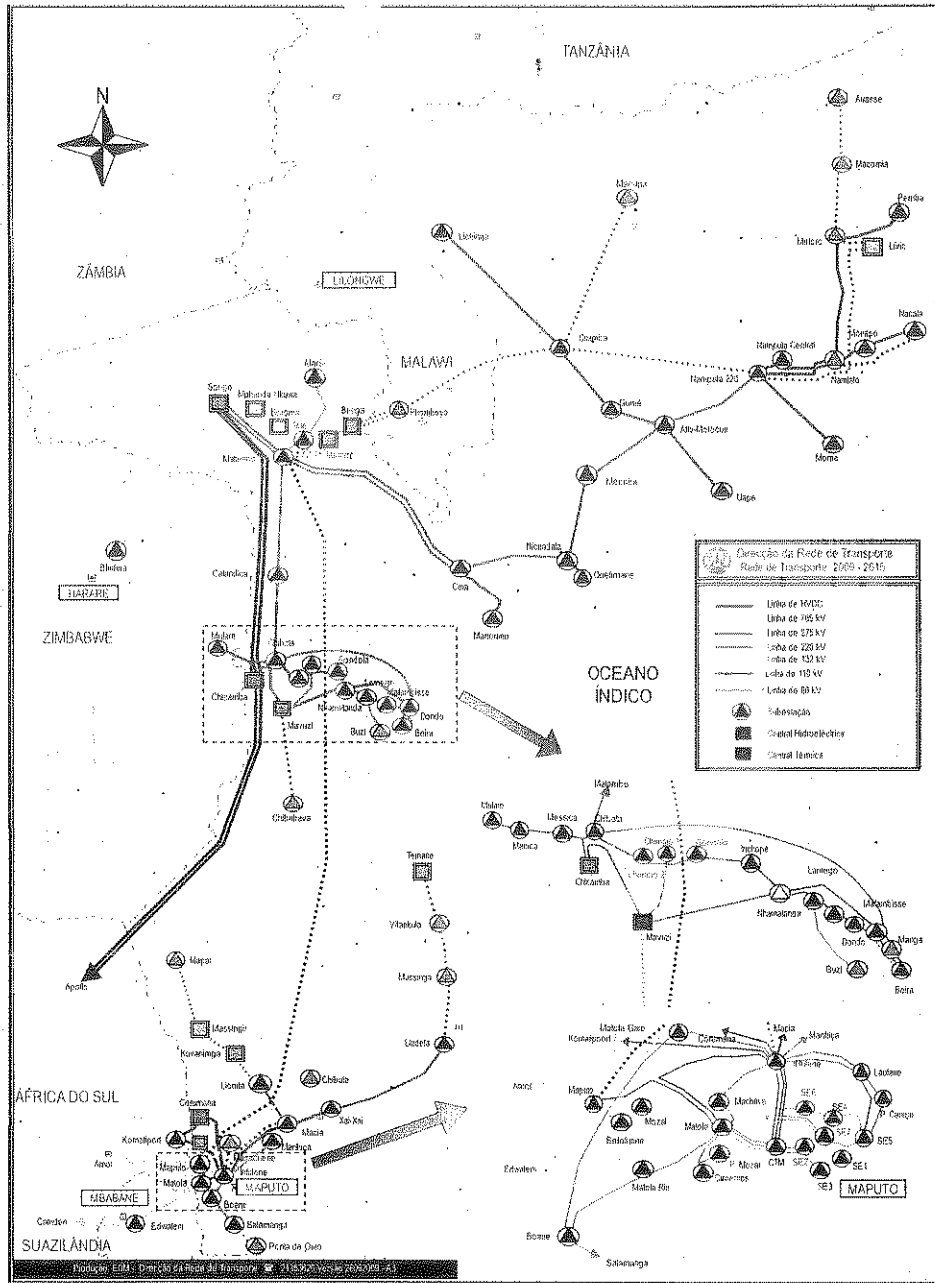
Rede de Transporte/Transmission Network



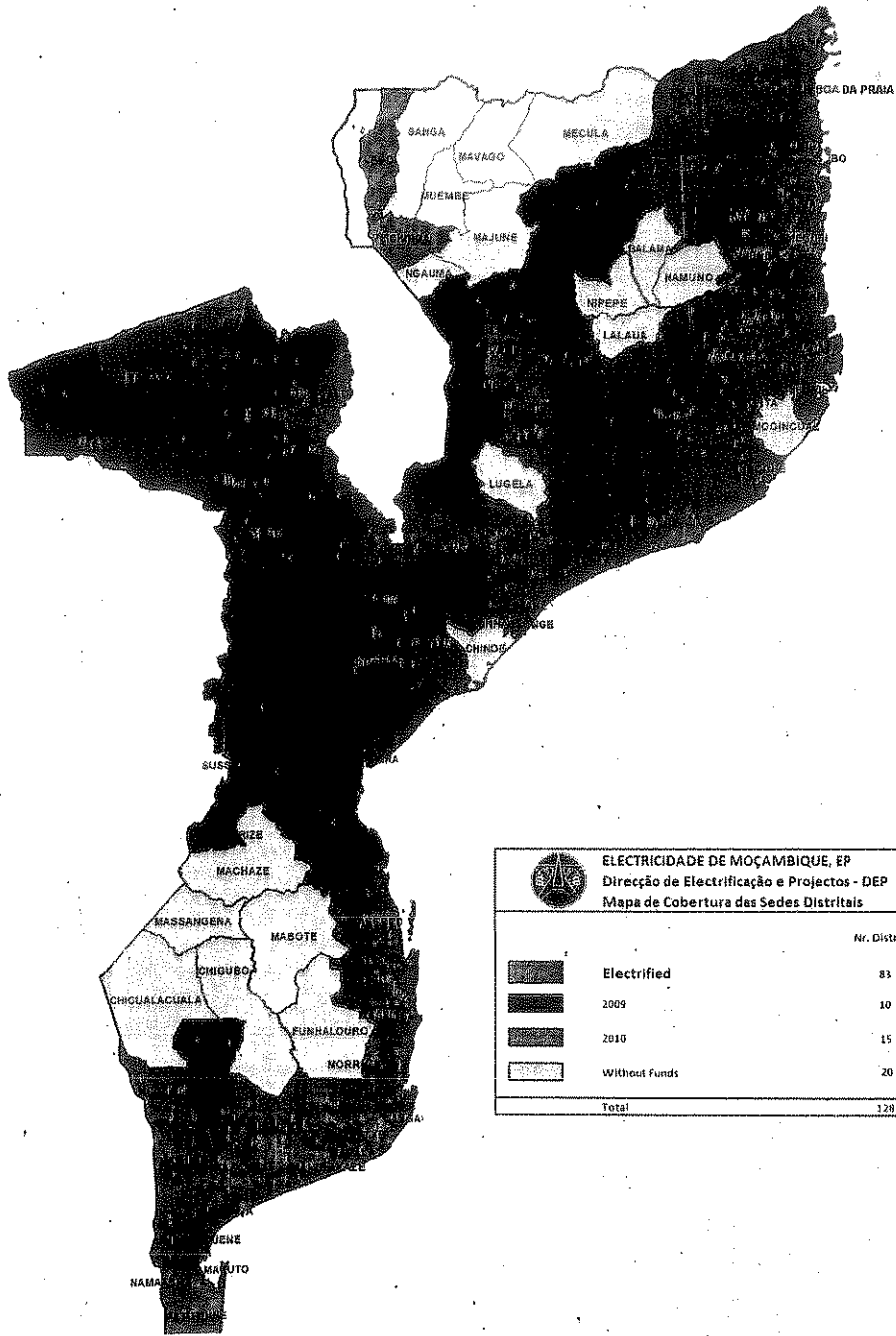
PRINCIPAIS INDICADORES DE QUALIDADE DE SERVIÇO DAS REDES DE TRANSMISSÃO E DISTRIBUIÇÃO
 NETWORK QUALITY INDICATORS







Rede de Transporte / Transmission Network



Projectos em curso para electrificação das Sedes Distritais
Ongoing Projects for Electrification of Chief Town up to 2010



ELECTRICIDADE DE MOÇAMBIQUE, EP			
Direcção de Electrificação e Projectos - DEP			
Mapa de Cobertura das Sedes Distritais			
		Nr. Distritos	Nr. Distritos Acumulados
	Electrified	83	88
	2009	10	93
	2010	15	108
	Without Funds	20	128
Total		128	

**ELECTRICIDADE
DE MOÇAMBIQUE, E.P.**

Av. Agostinho Neto, n.º 70 - C.P. 2447
Tel: +258 21 490 636 - Fax: +258 21 491 048 - Maputo
www.edm.co.mz