



# Solar Pumping Products

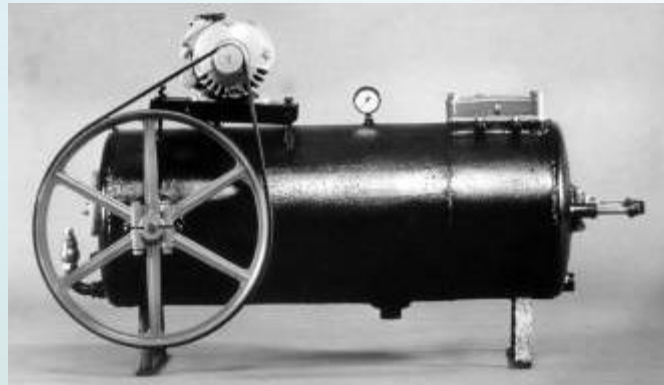
Solar Water Solution

be  
think  
innovate

**GRUNDFOS** 

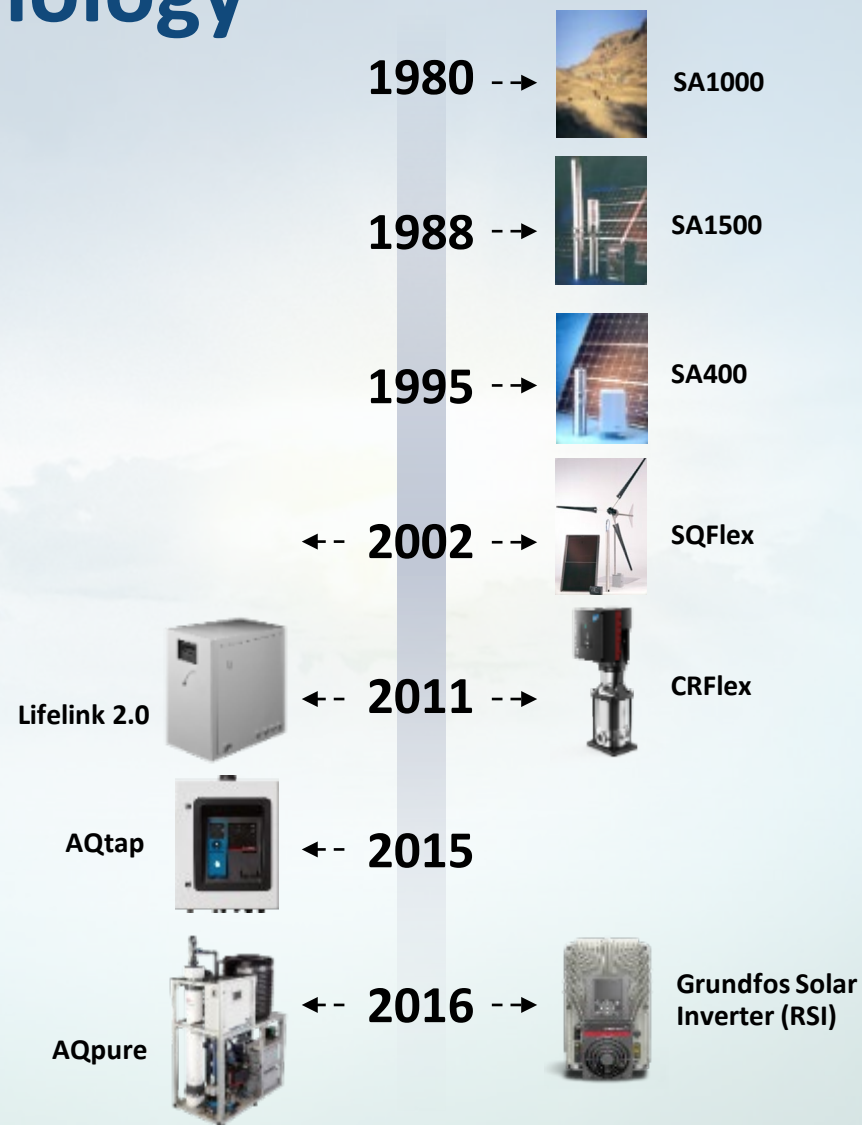
# The world's largest manufacturer of pumps and pump systems

- Founded in 1945 by Poul Due Jensen
- Annual production of more than 16 million pump units
- Turnover of DKK 27 billion in 2018
- Global coverage with more than 80 companies in 55 countries
- More than 19,000 employees worldwide
  
- First SP in 1968
- First solar in 1980



# Leaders in off-grid technology

- First **off-grid water supply** in 1980
- Continuously improved efficiency with the original system using an **external inverter**
- **SQFlex** submersible pump launched in 2002 with an integrated solar inverter – the **CRFlex** surface pump followed in 2011
- First water dispenser launched in 2011 – the intelligent **AQtap** water ATM followed in 2015
- **RSI** launched in 2016 for large solar water supply, perfectly matched to standard Grundfos pumps
- **AQpure** water treatment system released





# We've supplied hundreds of thousands of solar pumps



## Toledo, Spain

- Vineyard with 2,700 vines
- Products: SP + RSI + GRM
- Solar panels: 6000 W
- Est. water consumption: 2,000 m<sup>3</sup>/hectare/year

## Alentejo, Portugal

- 1500 m<sup>2</sup> greenhouses & 700 trees
- Products: SQFlex
- Energy savings of EUR 90 per month

## Munarya, Uganda

- Water supply, smallholder coffee farmers
- Products: SQFlex + CU200
- Pumping to 5 x 5000 litre tanks
- Water available from 5 water points

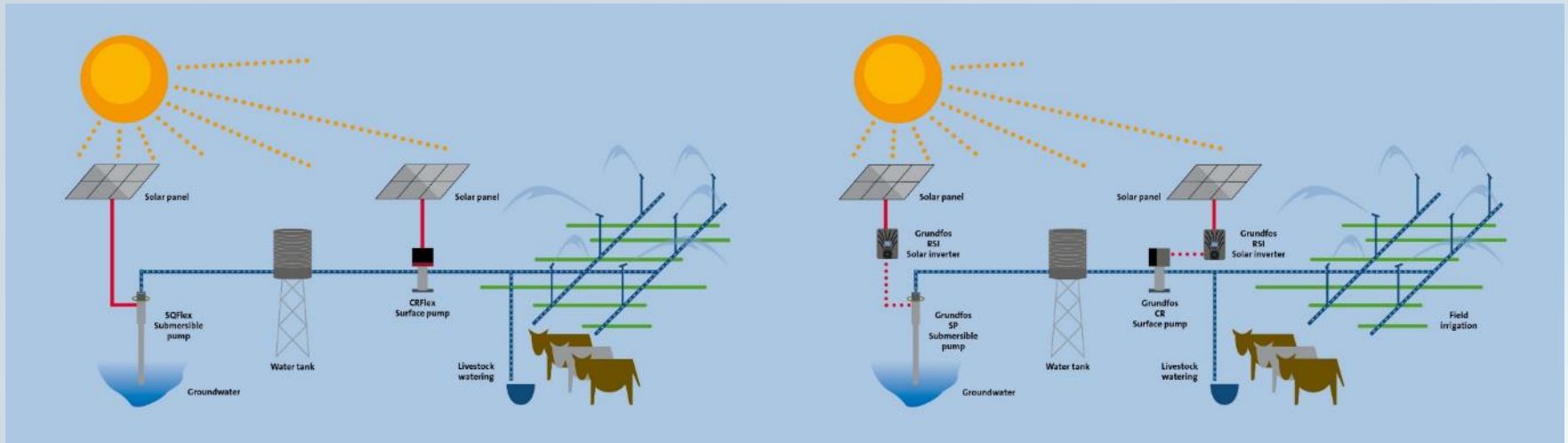
## Sumatra, Indonesia

- Water supply for Terdjun village, population 18,000
- Products: SQFlex + CU200
- Solar panels: 900 W
- Pumping from 40 m well, 58 m head

## Hamilton Downs, Australia

- 2,000 km<sup>2</sup> outback farm with 5,000 cattle
- Products: SQFlex + CU200
- Solar panels: 564 W with generator back-up
- Watering to cattle and domestic supply

# Grundfos Solar Water Solutions



## Submersible

*Well water intake, water transfer*

## Surface pump

*Irrigation, water distribution, pressure boosting*

### SQFlex 2.5kW



- Centrifugal or Helical version
- Solar, Wind or Combi System
- AC/DC Compatible
- Built-in MPPT (drive)
- Plug and Pump
- Reliable water supply
- Virtually no maintenance
- Low Life Cycle cost

### RSI solar inverter 250kW



- External Solar Drive
- MPPT function
- Up to IP 66
- UL Approval
- Maximum Amb. Temp 60°C
- Low Life Cycle cost
- Versatile system configuration
- Made in Europe

### CRFlex 1.73kW



- Solar or Wind System
- AC/DC Compatible
- Built-in MPPT (drive)
- Plug and Pump
- Reliable water supply
- Virtually no maintenance
- Low Life Cycle cost

# Energy options – Grundfos Solar Water Solutions

## ENERGY SOURCE



## PRODUCT



SQFlex submersible pump



MGFlex



RSI solar inverter



# SQFlex - Submersible pump with built-in drive

## Specifications:

- Motor size: 2.5 kW (P1)
- Flow rate (Q): 18 m<sup>3</sup>/h (90 m<sup>3</sup>/day)
- Head (H): 250 m (820 feet)
- Liquid temperature: 0 °C to +40 °C
- Enclosure class: IP68
- Installation depth max 150 m
- Voltage supply
  - 30 to 300 VDC
  - 1x90-240 VAC, 50/60 Hz
- Pump type;
  - 3" Helical
  - 3" centrifugal
  - 4" centrifugal

## SQFlex features:

- Compatibility to AC and DC power sources
- Universal connection - polarity protection
- Wide voltage range
- Compatible to Solar, Wind or Combi System
- Simple installation for reliable water supply
- Dry running protection
- Works with CU200 and CIU903



# Pump technology



## Helical (Positive displacement)

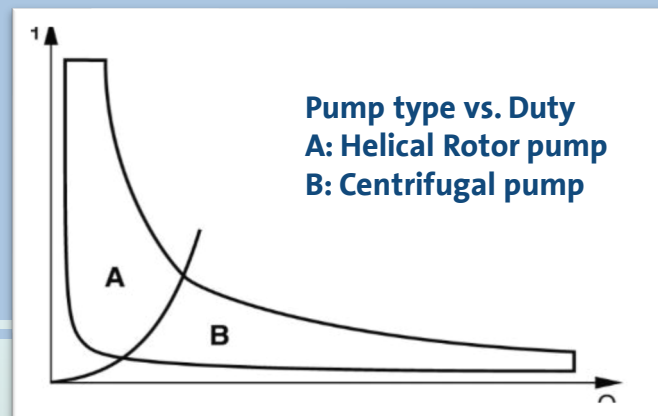
High Head Performance, 3" diameter pump, 5 different variants

- High pressure
- Stable flow
- Ideal for low flow, high head, variable speed
- Same efficiency on the full curve
- Fits in smaller wells

## VS Centrifugal (velocity pump)

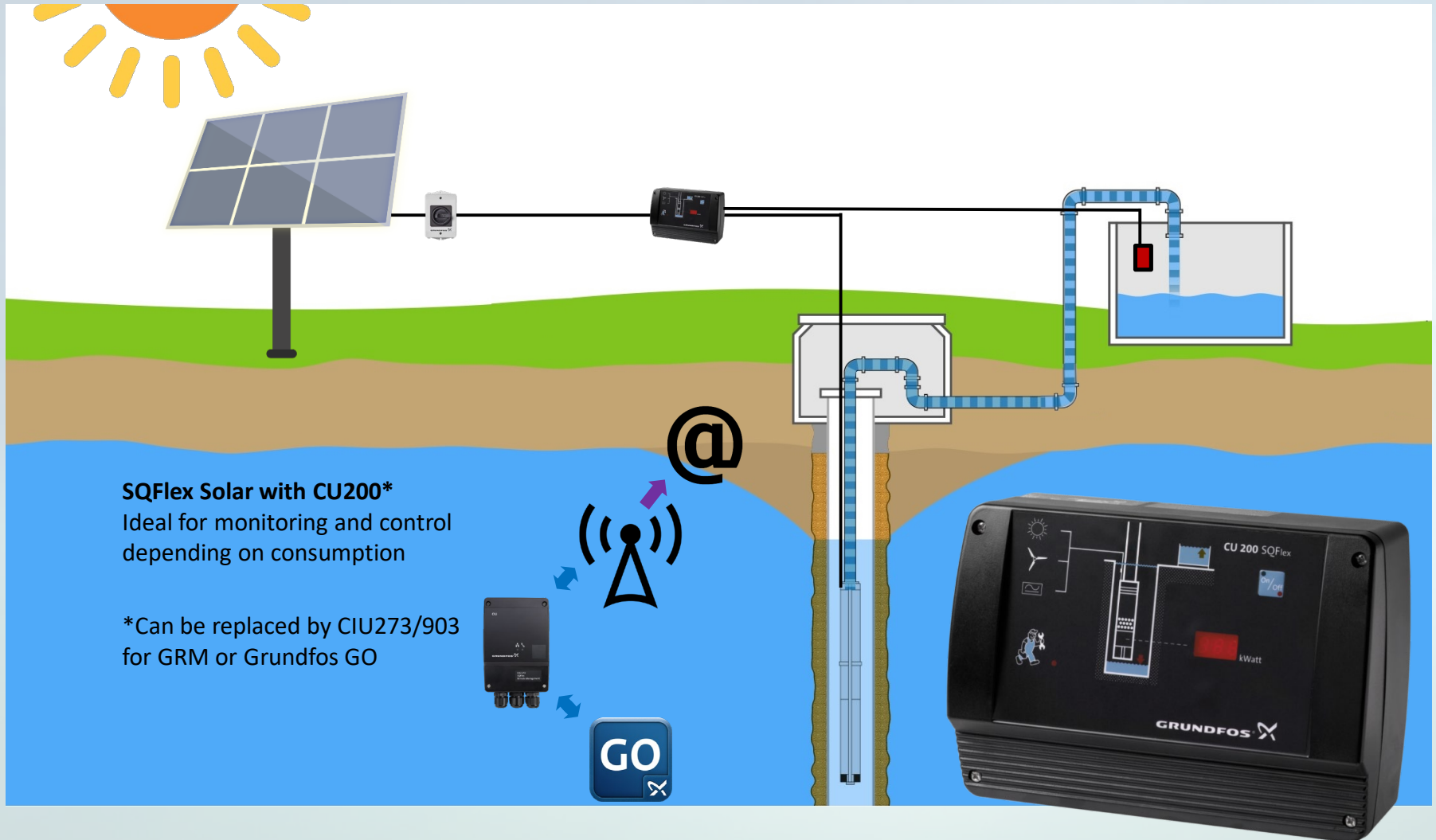
High Flow Performance, 3" + 4" diameter pump, 6 different variants

- High flow
- Flow rate changes with pressure
- Ideal for high flow, low head
- Highest efficiency in specific duty point
- Good sand handling

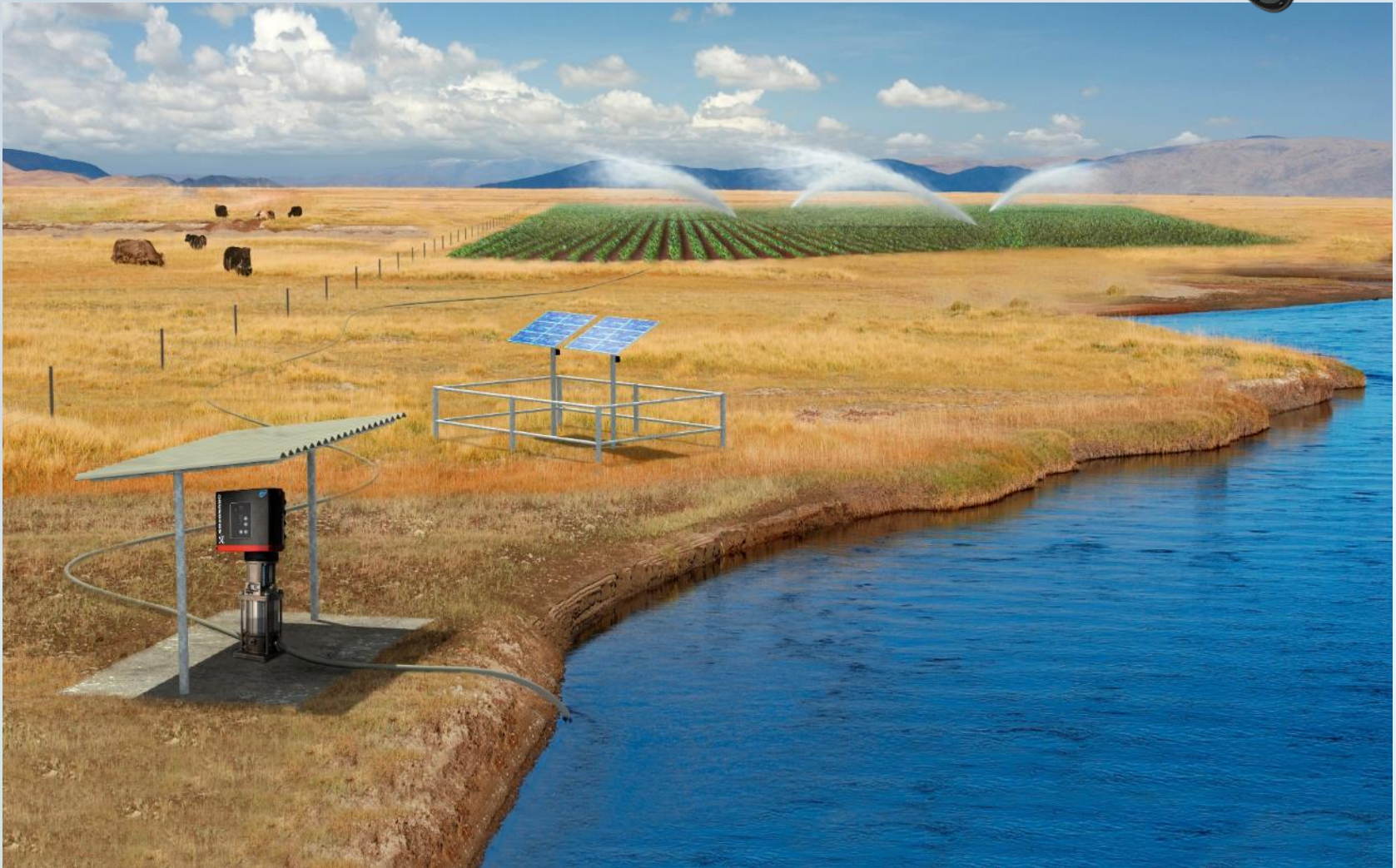




# SQFlex system options - control



# Surface pump - Installation



# MGFlex solar surface motor

The Grundfos **MGFlex solar surface motor** is specifically designed for solar energy applications with various Grundfos hydraulics.

When used with reliable multistage CR hydraulics, the result is the high efficiency **CRFlex solar surface pump**.

- **Built-in frequency converter** with MPPT software and motor protection
- **AC/DC** compatible
- Multiple sensor/switches connections (3x analog input and 2x digital input)
- **Wide** Voltage range
- **High efficiency**
- Wide material range
- **Easy** installation
- Motor size 0.88kW and 1.73kW (P1)
- Voltage range 30-300 VDC or 1 x 90-240 VAC 50/60 Hz



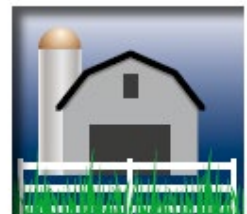
IRRIGATION



LIVESTOCK



SWIMMING POOL



FARM HOUSE



# Grundfos Solar Inverter (RSI)

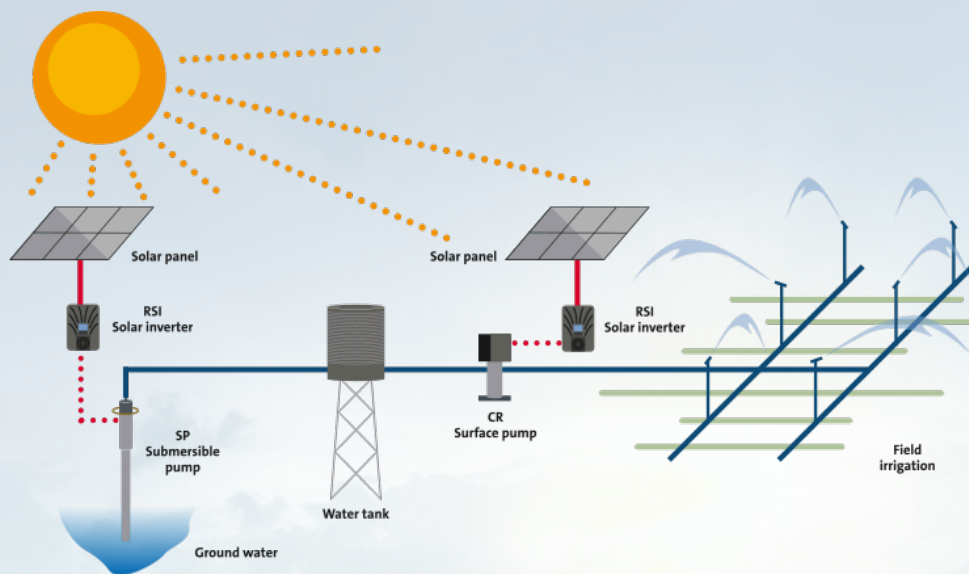
The intelligent off-grid **Grundfos Solar Inverter (RSI)** can power nearly all Grundfos pumps, greatly expanding possibilities for solar energy water supply systems.

- Works with almost any Grundfos pump **up to 250 kW**
- Retro fit AC system to solar





# RSI benefits



- **AC/DC compatible:** Can switch to mains power or generator if required, simply connect the two power sources via an external switchover box. Supports power blending.
- **Quick setup Wizard:** Set up in less than 5 minutes. All that is required is confirmation of motor type and pre-set value. Set up in the workshop for easy plug-and-pump onsite.
- **Build in pump selection:** Relevant pump parameters are pre-programmed
- **Advanced MPPT software:** Continuously optimises the system, improving power and water output by up to 30 %.
- **Up to IP66 enclosure class:** No need to use a weatherproof cabinet, saving on installation costs.

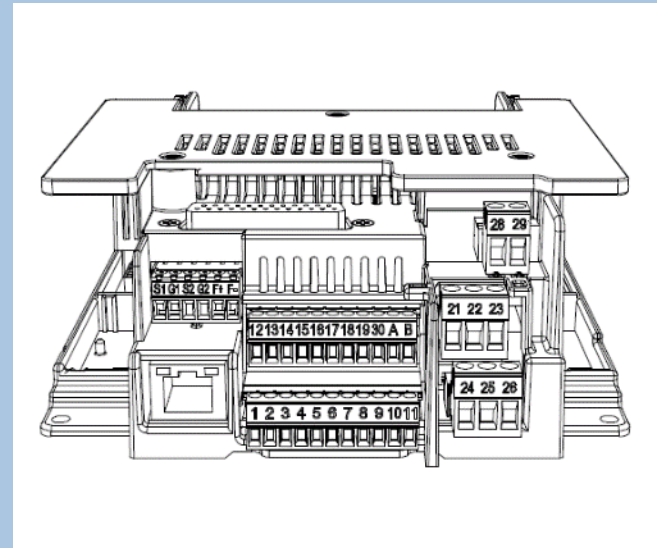
# Pre-configured digital inputs



The **RSI** comes with a number of **pre-configured digital inputs**.

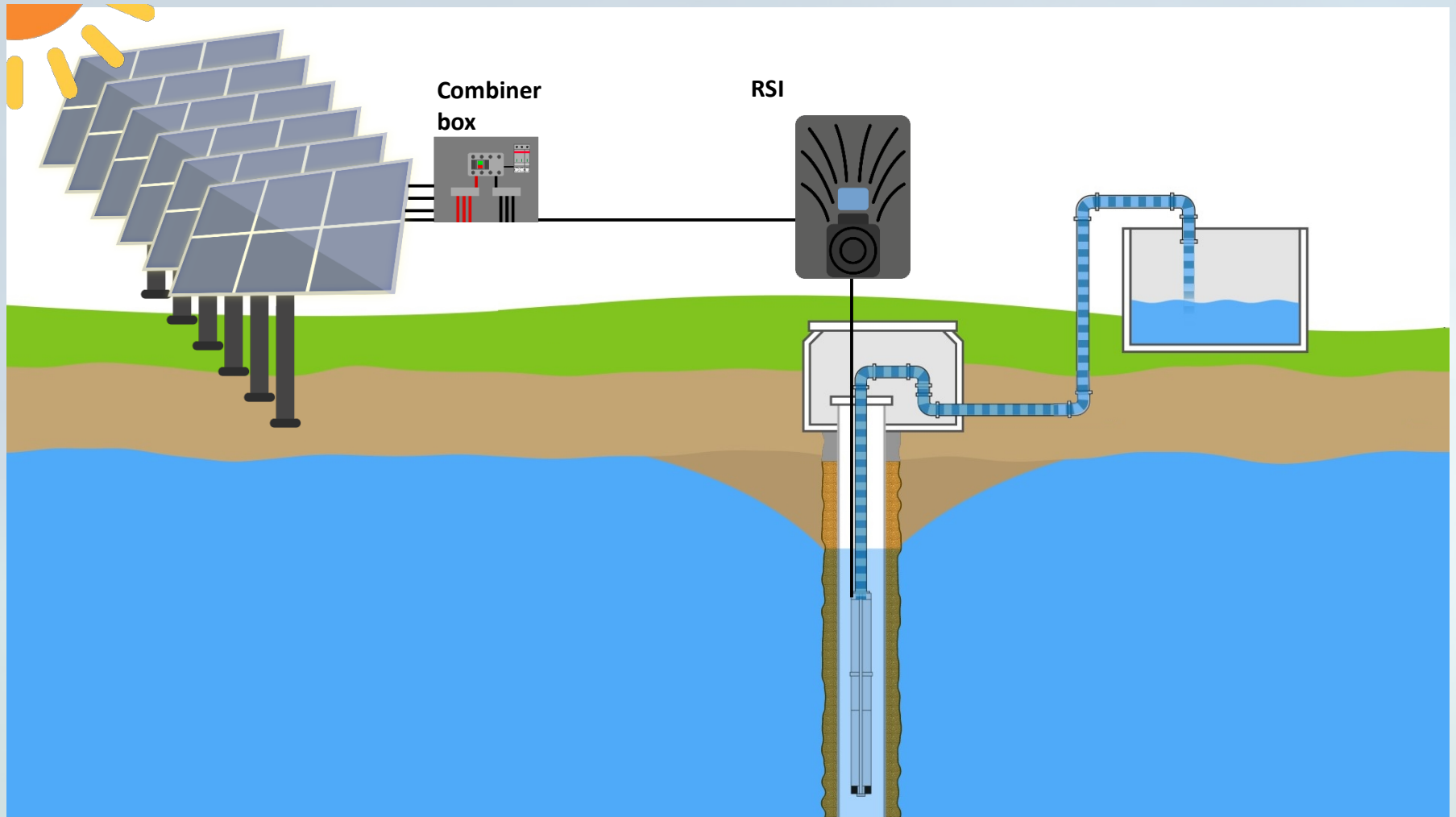
## Preconfigured digital inputs:

- **Digital Input 1:** Start (Start/stop function)
- **Digital Input 2:** Tank max. level (Level switch in tank)
- **Digital Input 3:** Well min. level (Level switch in well)
- **Digital Input 4:** Flow switch (Normal), can also be used with delay to protect against dry running and running against closed valve (Protect)
- **Digital Input 5:** Flow meter (Pulsating)
- **Digital Input 6:** AC Mains



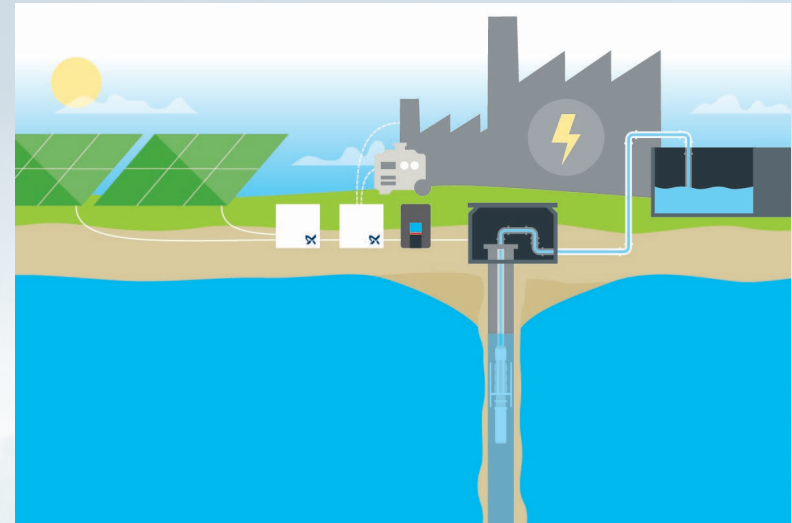
\* Digital inputs, should be connected with 24VDC

# RSI



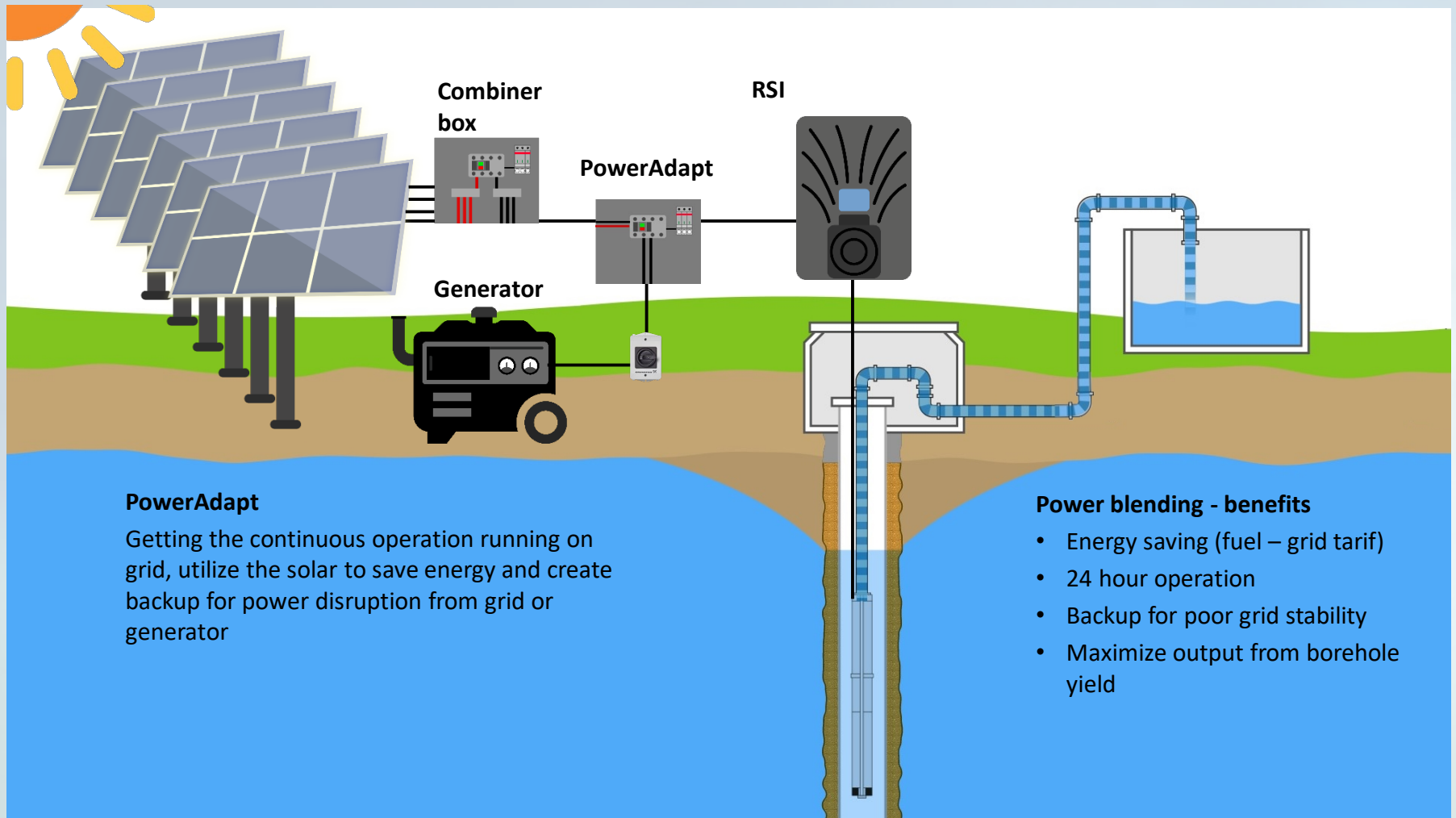
# Grundfos *PowerAdapt*

Enabling a seamless 24/7 operation experience, **PowerAdapt** will use solar power as primary source and top up the missing power with the connected AC supply in order to create a constant power output.



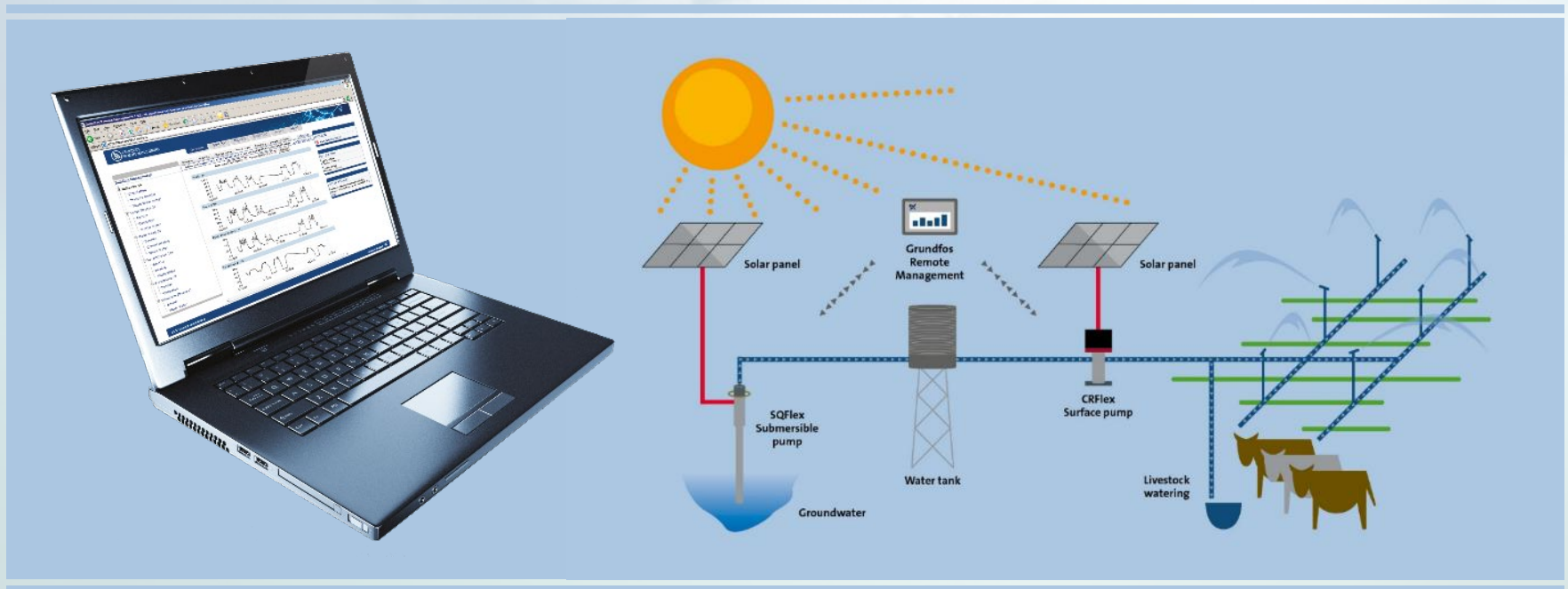


# RSI with PowerAdapt



# System monitoring with GRM

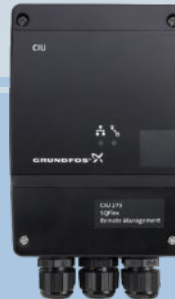
**Grundfos Remote Management** is a cost-effective and straightforward way to monitor and manage pump installations. It reduces the need for onsite inspections and in the event of an alarm or warning, the relevant people are notified directly.



# Monitoring GRM

## Why

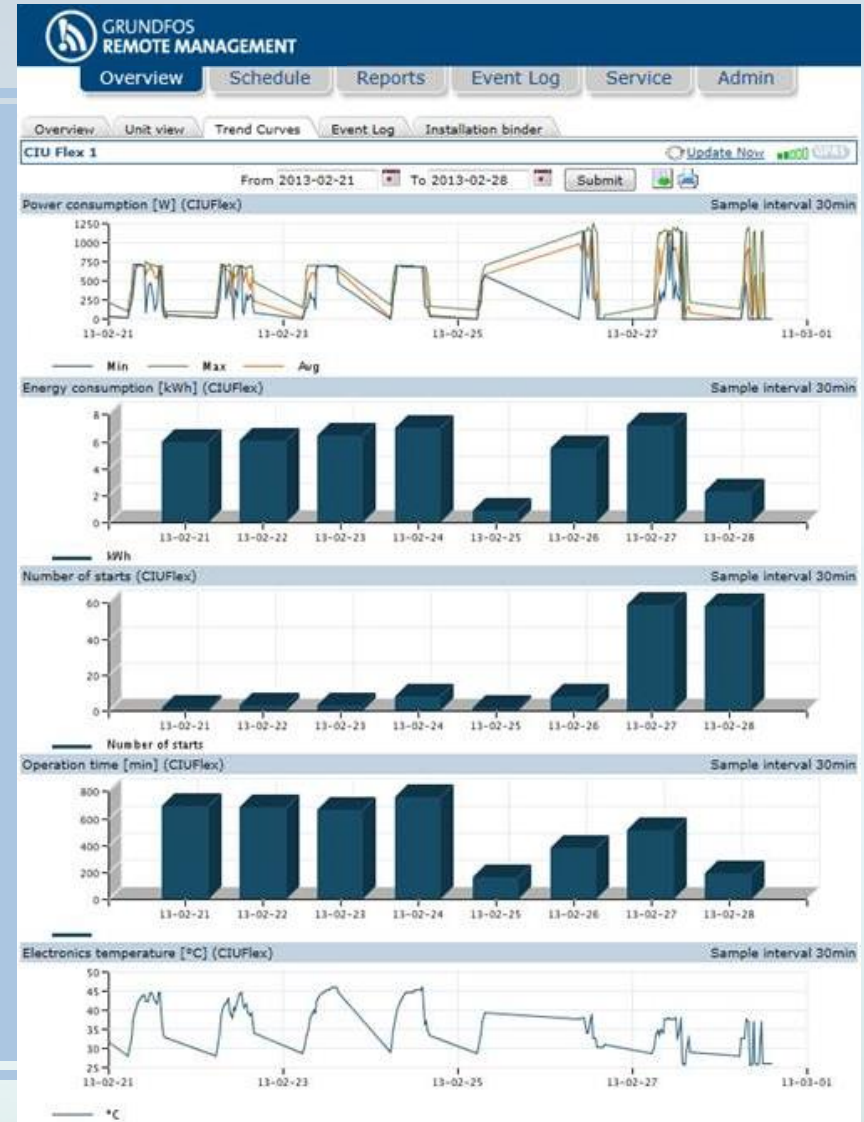
- Get information of operation
- Detailed VFD/motor
- Trend curves
- Alarm / Warnings



Overview	Unit view	Settings	Trend Curves
CIUFlex (1) Last Updated: Jan 18, 2016 6:57:46 AM			
<b>Status Information</b>			
Operating Mode	Pump running		
Voltage	166.8 V		
Speed	2650 rpm		
Power consumption	450 W		
Electronics temperature	42 °C		
DI 1 (Start/Stop)	Start		
DI 2 (Levelswitch)	Inactive		
<b>Operation Log</b>			
Operating hours	2542 h		
Number of starts	2133		
Energy consumption	2185 kWh		
Volume	74534.8 m <sup>3</sup>		
<b>Latest Events</b>			
Date	Log message		

## Benefits

- Trend curves
- React on actual events
- Minimize service visits
- Preventive maintenance



# Preparation for solar installation

## Sizing / Selection:

- GPC desktop version
- [www.grundfos.com](http://www.grundfos.com)
- [www.product-selection.grundfos.com](http://www.product-selection.grundfos.com)
- Fill in needed information:
  - Location
  - Static and dynamic head or TDH
  - Water per day (6 hours\*safe yield)
- Size and Select

The image shows two screenshots of the Grundfos website. The top screenshot is the homepage, featuring a large banner for 'FARMERS GROW THEIR BUSINESS WITH IRRIGATION' with a man pointing towards a herd of cows in a field. Below the banner are sections for 'Products' and 'Service'. The bottom screenshot shows the 'PRODUCT CENTER' page with a search bar and a 'FIND PRODUCTS AND SOLUTIONS' section. This section includes four main categories: 'SIZING' (highlighted), 'CATALOGUE', 'REPLACEMENT', and 'LIQUIDS'. Below these categories is a 'SIZING' tool interface with input fields for 'Enter duty point' (Flow and Head) and 'Select what to display' (Stationary equipment, Data by pump design, Stationary pump layouts). A 'START SIZING' button is visible on the right.



# Puerto Rico

## Situation: Disaster help

- Water supply during power outage
  - Backup for grid
  - Energy saving by switching

## • Products used

- Retro fitting to installed pumps
  - (SP's, CR's etc.)
- RSI
- Typical 5-15 kW solar power



# Ethiopia - Bui

## Situation: Water supply

- Ground water supply with transfer
  - Deep well 200m
  - Transfer 5 km
- **Products used**
  - 1 x SP 7
  - 1 x RSI 15kW
  - 114 pcs of 270Wp solar panel





# Nepal, Kathmandu

## Situation: Drinking water

- Ground water pumping to storage tank
  - Used for drinking water
    - Communities 500-1000 people
    - Mountains farmers

## • Products used

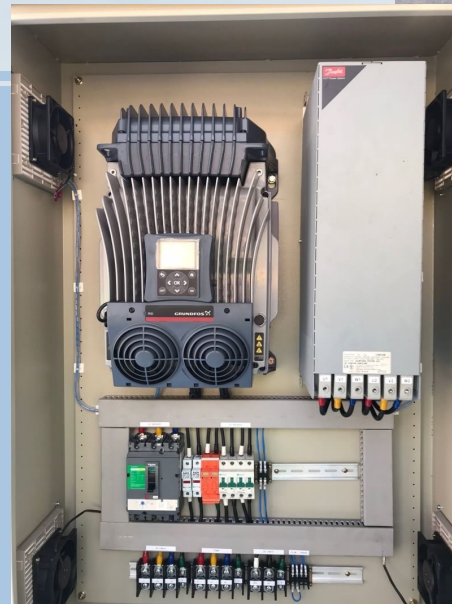
- 1 x SP 17
- 1 x RSI 30kW
- 38 pcs of 350Wp solar panel



# Thailand, Lumpang Province

## Situation: Water transfer

- Water transfer from lake to storage
  - Used for irrigation and farming
  - 1000 people
- **Products used**
  - 4 x CR 32
  - 4 x RSI 30kW
  - 130 pcs of 400Wp solar panel





# India, Pradikala, Nagpur

## Situation: Drinking water

- Dual system for easy access to water all year
  - Hand pump for bad weather
  - SQFlex delivers water even in dry season when water level drops below 50-70m
- **Products used**
  - “Dual” hand pump with SQFlex
  - 1 x CU200
  - 3 \* 270W solar panels





Thank you

be  
think  
innovate

GRUNDFOS 