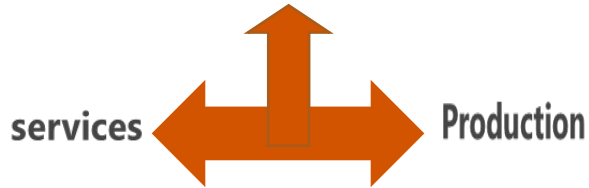


Building sustainable Energy Markets and Delivery model in Refugee settings in Uganda

Energy



Humanitarian Assistance ← → Development Support

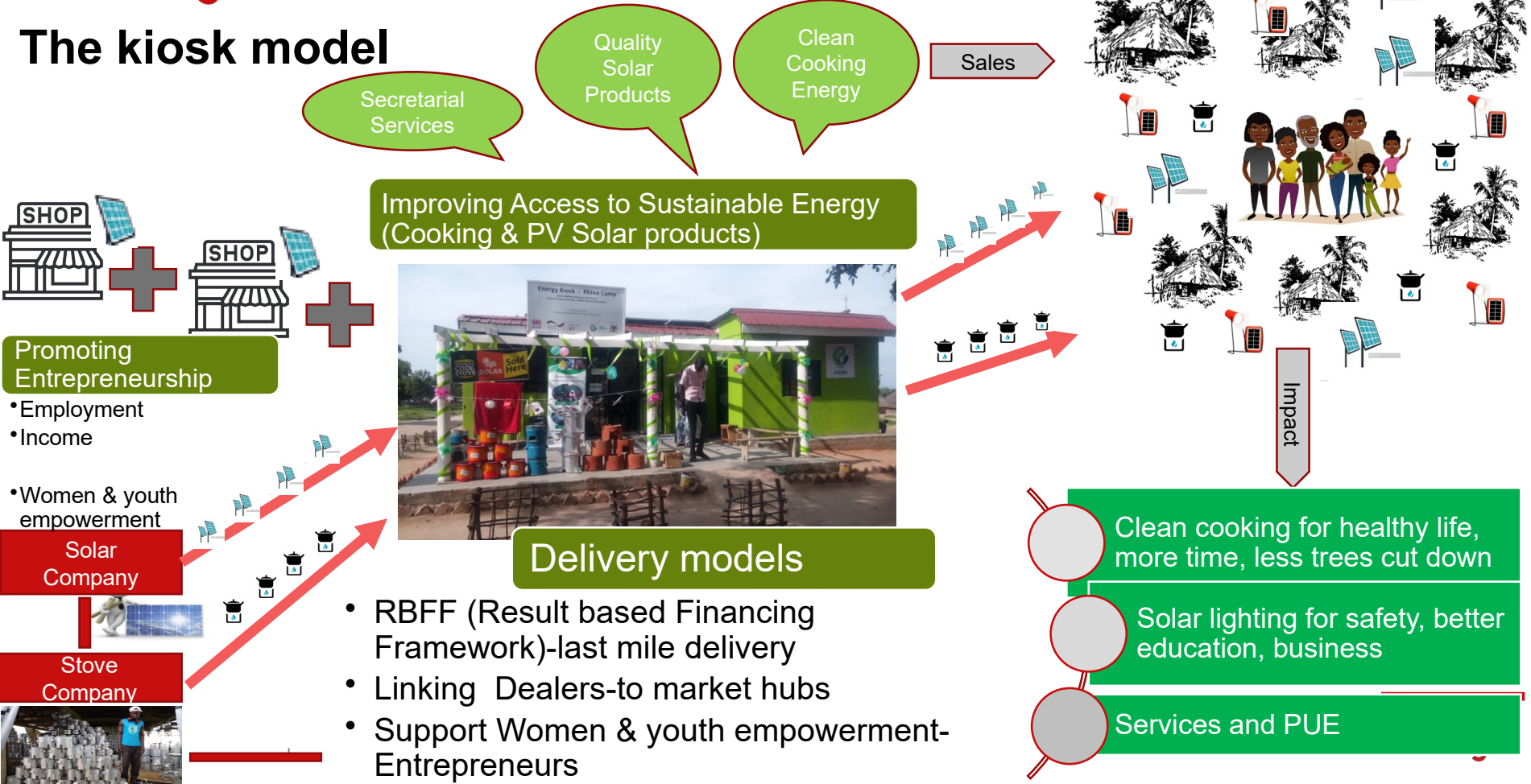
Peace Nexus

giz Deutsche Gesellschaft für Internationale Zusammenarbeit (GIZ) GmbH



Ben Butele, ESDS/ENDEV Uganda
2021.11.09

The kiosk model



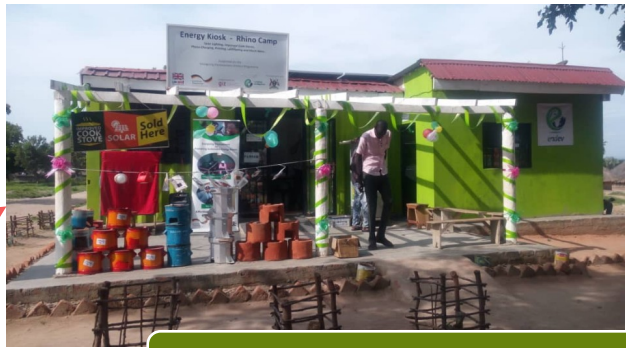
Secretarial Services

Quality Solar Products

Clean Cooking Energy

Sales

Improving Access to Sustainable Energy (Cooking & PV Solar products)



Delivery models

- RBFF (Result based Financing Framework)-last mile delivery
- Linking Dealers-to market hubs
- Support Women & youth empowerment-Entrepreneurs

Impact

- Clean cooking for healthy life, more time, less trees cut down
- Solar lighting for safety, better education, business
- Services and PUE



Promoting Entrepreneurship

- Employment
- Income
- Women & youth empowerment

Solar Company

Stove Company



Challenges

- Private sector actors- Risk of reaching last Mile (RBFF)
- Not many local marketeers yet trained within settlements this model.
- Some development partners still give-handouts in form cooking products-distorting the delivery model for vendors
- Unavailability of key product information making client decision hard
- COVID 19 -partial lockdown, melt down of business

